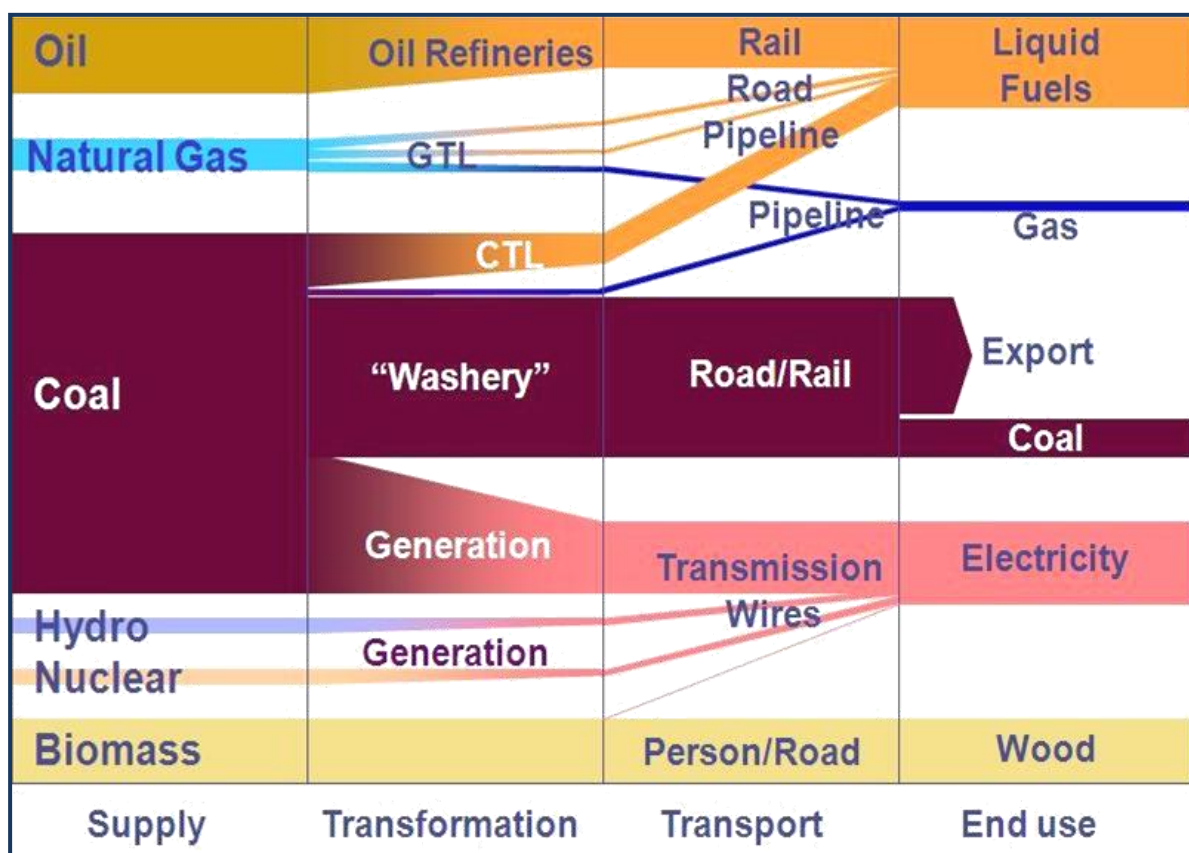


SOUTH AFRICAN ENERGY

Price Report

2011



Directorate: Energy Information Management,
Process Design and Publications



energy

Department:
Energy
REPUBLIC OF SOUTH AFRICA

ENERGY PRICE REPORT

2011

Directorate: Energy Information Management, Process Design and Publications

Compiled by:

Mr. Ramaano Nembahe

Ramaano.Nembahe@energy.gov.za

Ms. Lehlogonolo Matseba

Lehlogonolo.Matseba@energy.gov.za

Published by:

Department of Energy

Private Bag X96

Pretoria

0001

Tel: (012) 406-8000

E-mail: Publication@energy.gov.za

192 Visagie Street, Corner Paul Kruger & Visagie Street, Pretoria, 0001

Website: <http://www.energy.gov.za>

DEPARTMENT OF ENERGY

Director-General

Ms N Magubane

ENERGY POLICY AND PLANNING BRANCH

Deputy Director-General

Mr O Aphane

ENERGY PLANNING CHIEF DIRECTORATE

Chief Director:

Ms T Ramuedzisi

**ENERGY INFORMATION MANAGEMENT, PROCESS DESIGN AND
PUBLICATIONS DIRECTORATE**

Acting Director

Mr R Nembahe

THIS, THE SIXTH EDITION, PUBLISHED IN MARCH 2013.

WHEREAS THE GREATEST CARE HAS BEEN TAKEN IN THE COMPILATION OF THIS PUBLICATION, THE DEPARTMENT OF ENERGY DOES NOT HOLD ITSELF RESPONSIBLE FOR ANY ERRORS OR OMISSIONS.

COPYRIGHT RESERVED

FOREWORD

It gives me great pleasure to introduce the Energy Price Report 2011 for South Africa. The Energy Price Report is based on information collated from Government Departments, Oil and Gas Industries and State Owned Entities.

Key challenges encountered during the production of the Energy Price Report include amongst others; lack of accurate and reliable data and the timely provision thereof, which delayed the finalisation and publication of this report.

This publication presents energy price data in a format which provides an overall picture of monthly and annual energy prices for common energy carriers used in South Africa. The Energy Price Report provides up-to-date and detailed price data and comparisons of different petroleum products, coal and electricity. Energy Prices and other related information are also published on the Department of Energy (DoE)'s website: www.energy.gov.za.

I would like to thank and congratulate all the staff in the Directorate: Energy Information Management, Process Design and Publications for the hard work that went into the compilation of this publication.

A significant difference in this publication is that:

- Historical prices of petroleum prices are only supplied as of 2003, when the basic fuel price (BFP) was introduced. This will enable comparability of price changes going forward.
- The annual costs of the various components of the BFP are also included and this enables the public to clearly distinguish and understand the contribution of the crude oil price against government levies and other costs to the fuel prices.
- We have also included a section which provides the cost of certain energy fuels in South Africa with those of other economies.

Going forward, the Energy Price Report will include energy and petroleum price data on a rolling 10-year window as historical information will always be available in our previous editions.

The Department of Energy is working hard to reduce delays in the publishing of Energy Price Report and hopes that the publication will become a standard work of reference among energy professionals in South Africa and abroad. Comments and inputs are welcome and could be addressed to Publication@energy.gov.za.

Ms N Magubane
Director General
Department of Energy

Contents	Page
1 INTRODUCTION.....	1
2 PETROLEUM.....	2
2.1 Crude oil.....	2
2.2 Petroleum products.....	7
2.3 Natural gas.....	36
3 COAL.....	40
3.1 Local and export coal prices.....	40
4 ELECTRICITY.....	45
APPENDIX A: ECONOMIC INDICATORS.....	51
APPENDIX B: FUEL PROPERTIES.....	53
APPENDIX C: UNIT CONVERSIONS.....	54

Table of Tables

Table 2.1: Annual crude oil prices - US\$/bbl	3
Table 2.2: Monthly crude oil refinery FOB and BFP prices - c/l.....	3
Table 2.3: Monthly retail petrol prices - cents per litre (c/l).....	9
Table 2.4: Monthly petrol prices – individual components ULP 93- Inland price - cents per litre (c/l)	11
Table 2.5: Monthly diesel wholesale prices - cents per litre (c/l)	16
Table 2.6: Monthly wholesale diesel prices - individual components (Reef) - cents per litre (c/l)	20
Table 2.7: Monthly illuminating paraffin price	28
Table 2.8: Monthly regulated maximum refinery gate price for liquefied petroleum gas (LPG).....	31
Table 2.9: Annual Natural gas tariffs - Rand per gigajoule(R/GJ)	36
Table 3.1: Annual average local and export coal prices - Rand per ton (R/t)	40
Table 3.2: Annual local coal prices - Rand per ton (R/t).....	43
Table 4.1: Annual electricity Eskom price by customer category (nominal prices)-cents per kilowatt per hour (c/kWh)	45
Table 4.2: Annual electricity Eskom prices by customer category (real prices) - cents per kilowatt per hour (c/kWh)	46
Table 4.3: Annual Eskom domestic tariffs	49
Table 4.4: Annual Eskom domestic tariffs	50
Table A.1: Annual consumer price index (CPI) and Production Price Index (PPI) ...	52
Table A.5: Annual foreign currency exchange rates.....	522
Table B.1: Calorific values of various fuels.....	53
Table C.1: Energy unit conversion factors.....	54
Table C.2: Unit prefixes.....	54

Table of Figures

Figure 2.1: Annual crude oil prices - US\$/bbl	2
Figure 2.2: Monthly crude oil and BFP prices - cents per litre (c/l)	6
Figure 2.3: Retail petrol prices - individual components 2011 (ULP 93, nominal at coast) - cents per litre (c/l)	15
Figure 2.4: Diesel wholesale prices (c/l)	19
Figure 2.5: Monthly wholesale diesel prices BFP - individual components (nominal on Reef) - cents per litre (c/l)	27
Figure 2.6: Monthly illuminating paraffin price - real prices for 2008 base year (coast) - cents per litre (c/l)	30
Figure 2.7: Monthly liquefied petroleum gas - regulated maximum refinery gate prices - real prices for 2008 base year (coast) - cents per kilogram (c/kg)	35
Figure 2.8: Monthly Sasol gas tariff - Rand per gigajoule (R/GJ)	39
Figure 3.1: Annual average local sales (FOB) - real prices for 2008 base year - coal price - Rand per ton (R/t)	42
Figure 3.2: Annual local coal prices (nominal) - Rand per ton (R/t)	44
Figure 4.1: Annual Eskom prices by customer category - cents per kilowatt per hour (c/kWh)	47

ABBREVIATION

BFP	–	Basic fuel price
CPI	–	Consumer Price index
CIF	–	Cost, Insurance and Freight
COC	–	Customer Own Collection
DME	–	Department of Minerals and Energy
DoE	–	Department of Energy
HFO	–	Heavy furnace oil
IBLC	–	In-Bond-Landed-Cost
LPG	–	Liquid petroleum gas
LFIF	–	Liquid Fuels Industry Force
NERSA	–	National Energy Regulator of South Africa
PPI	–	Producer Price Index
RTC	–	Rail Tank Car
RAF	–	Road Accident Fund
SAPIA	–	South African Petroleum Industry Association
StatsSA	–	Statistics South Africa
SSLM	–	Self-adjusting Slate Levy Mechanism
ULP	–	Unleaded Petrol
LRP	–	Lead Replacement Petrol

1 INTRODUCTION

Energy provision is very crucial to the overall economic development. As the demand for energy grows, the energy sector is expected to play a significant role in fuelling the country's economic growth and development. The purpose of the Energy Price Report is to provide historical energy prices for the major energy carriers in South Africa. Energy prices are significant factors in the cost of providing services such as transport or electricity.

This report covers monthly and annual prices of various energy carriers. Prices for electricity are generally reviewed once a year while prices of petroleum products are changed once a month due to the fluctuations in the international oil price and exchange rates.

The report consists of the following sections:

- Section 2 covers prices of crude oil, natural gas and all major petroleum products (petrol, diesel, illuminating paraffin, liquid petroleum gas, and heavy furnace oil).
- Section 3 covers the prices of locally consumed and exported coal.
- Section 4 covers the national Eskom electricity prices. This doesn't include the prices of electricity sold in individual/various municipalities to end customers.

Each section gives a brief introduction followed by a table of information and a figure graphing the prices over time. Wherever possible a brief analysis of likely explanations for prices fluctuations is provided.

The report also includes Consumer Price Index (CPI), Production Price Index (PPI) and foreign exchange rates used in energy analysis for convenience when analysing price information and converting to other currencies.

2 PETROLEUM

This section covers the international crude oil prices as well as a breakdown of prices for petroleum products sold nationally prices. All the crude oil and petroleum product prices historical data is clearly depicted in the tables and figures in this section. The main focus of the analysis in this section will be on the major price fluctuations as well as related global and national events that led to the fluctuations.

2.1 Crude oil

The South African liquid fuels market cannot be fully understood without understanding the international oil market. South Africa imports approximately 95% of its crude oil requirements, which makes it the country's single-largest import item. Crude oil remains the most important energy source in the world. To ensure that international crude prices are consistent and transparent, international crude prices are used as a benchmark for crude oils from different countries. The most important crudes are Dubai in the Arab Gulf Region, West Texas Intermediate (WTI) in North America and Brent in Europe. South Africa uses Brent as a benchmark for its crude trade.

Majority of SA crude oil requirements are met by imports from Middle East and Mediterranean countries. The annual nominal and real prices of crude oil between 2003 and 2011 are depicted in Table 2.1; the first column is the nominal price whereas the second column is the real price of crude oil using 2008 as the base year.

World oil sales are denominated in US dollars and this implies that any changes in the value of the US dollars affects crude oil prices. Given the purchase of crude oil in US Dollar, the Dollar-Rand exchange rates add to domestic price movements. The weaker the rand, the more money paid for crude oil and the higher the fuel prices.

Table 2.1: Annual crude oil prices - US\$/bbl

Date	Crude Oil International	
	Nominal	Real (2008=100)
2003/01/01	28.84	23.23
2004/01/01	38.21	29.98
2005/01/01	54.39	41.28
2006/01/01	65.10	61.50
2007/01/01	72.50	68.40
2008/01/01	97.00	93.60
2009/01/01	61.50	61.60
2010/01/01	79.50	78.00
2011/01/01	111.30	106.20

Explanatory Notes:

1. Prices are in US\$.
 2. 2003 to date – Data Source: SAPIA. For twelve Month Average (SAPIA Annual Report)
-

The international annual crude oil prices between 2003 and 2011 are illustrated in Figure 2.1. In 2003 the graph shows a continuous price increase year after year until 2008. The prices declined slightly from 2008 to 2009 and increased again in 2010.

The crude oil markets sustained high price levels in 2011, as the spot price of Brent averaged \$111.26 per barrel, marking the first time the global benchmark average more than \$100 per barrel for a year. The price increases in 2011 reflected tightness in the global crude oil market that began in 2010 and marked the highest crude oil prices since 2008. Key factors that affected crude prices in 2011 included:

- Arab Spring: The Arab Spring and the civil war in Libya roiled oil markets during the first half of the year. Prices quickly escalated when protests in Libya intensified in late February 2011. As the result the spot price of Brent increased by \$15 per barrel from the 18th of February to the 02nd of March as the market coped with the loss of 1.5 million barrels per day of exports from Libya.
- Demand: Demand growth in emerging markets, notably China and the Middle East, also contributed to driving crude oil prices higher in 2011. During the first six months

of 2011, the demand for petroleum products in non-OECD grew by almost 4% just as the market was coping with the Libyan exports.

- Strategic Petroleum Release: In response to the loss of the Libyan supplies, the International Energy Agency`s member countries collectively released stocks from their strategic petroleum reserves at higher prices between April and July in 2011.

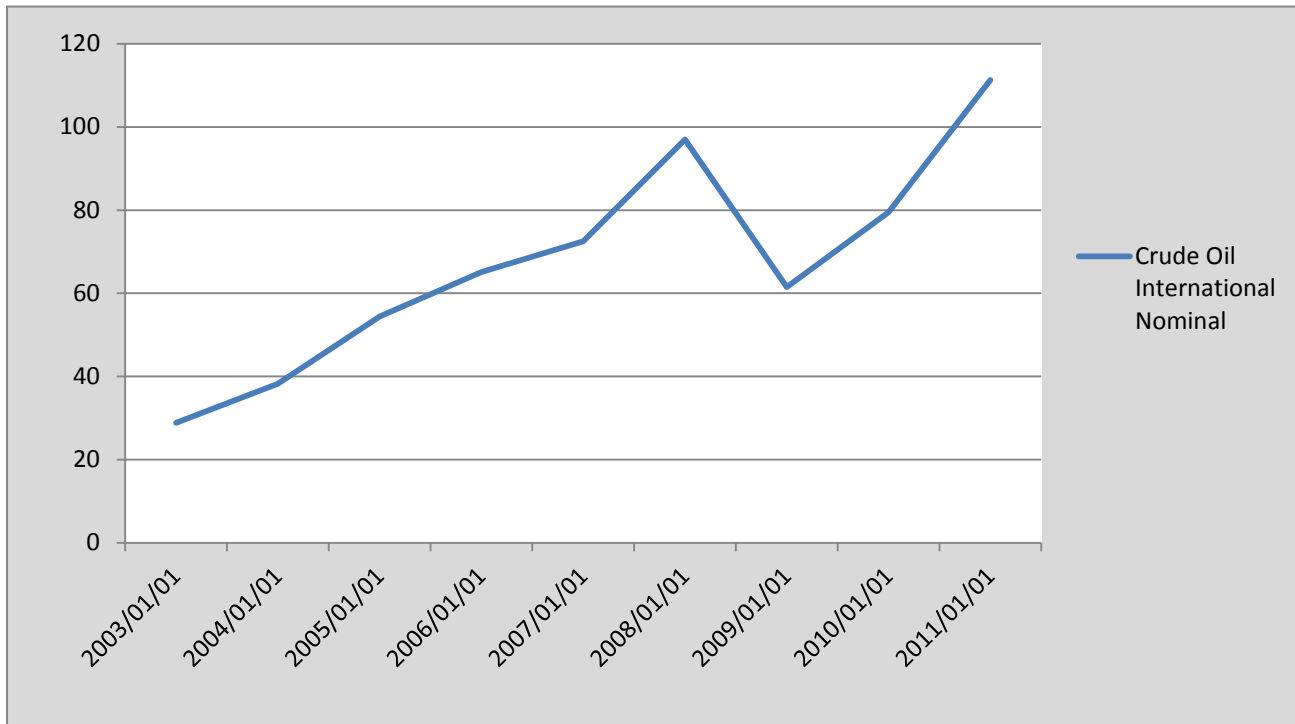


Figure 2.1: Annual crude oil prices - US\$/bbl

As clearly shown in the above figure, Crude oil prices have risen dramatically over the past few years, driven by strong global demand, limited oil production capacity and continuing political instability in major oil producing regions.

The monthly prices of Crude oil in Dubai, and the Basic Fuel Price (BFP) in South Africa between 2003 and 2011 are shown in table 2.2.

Table 2.2: Monthly crude oil refinery FOB and BFP prices - c/l

Date	Crude Oil Dubai Singapore Refineries F.O.B.	Petrol BFP
2003/01/31	153.01	220.73
2003/02/28	156.75	220.73
2003/03/31	138.51	225.79
2003/04/30	113.67	162.80
2003/05/30	117.43	164.30
2003/06/30	126.77	183.25
2003/07/31	126.83	181.57
2003/08/29	128.59	189.38
2003/09/30	116.87	168.11
2003/10/31	119.45	167.96
2003/11/28	117.28	159.94
2003/12/31	115.17	163.86
2004/01/30	125.66	195.03
2004/02/27	121.81	185.81
2004/03/31	128.68	199.44
2004/04/30	130.6	206.66
2004/05/31	148.16	241.20
2004/06/30	135.28	200.96
2004/07/30	133.57	202.68
2004/08/31	156.56	224.53
2004/09/30	146.38	224.16
2004/10/29	150.83	237.98
2004/11/30	132.81	211.63
2004/12/31	123.31	172.56
2005/01/01	142.37	199.91
2005/02/01	150.56	218.47
2005/03/01	173.28	259.67
2005/04/01	182.63	289.27
2005/05/01	180.78	266.23
2005/06/01	216.85	244.23
2005/07/01	222.73	273.23
2005/08/01	230.14	300.23
2005/09/01	226.08	326.23
2005/10/01	223.19	338.23
2005/11/01	215.14	307.23
2005/12/01	212.77	272.23
2006/01/01	234.34	283.01
2006/02/01	222.60	272.01
2006/03/01	223.24	297.41
2006/04/01	252.53	336.41
2006/05/01	249.14	372.41

Date	Crude Oil Dubai Singapore Refineries F.O.B.	Petrol BFP
2006/06/01	260.14	397.41
2006/07/01	304.24	428.41
2006/08/01	308.61	392.41
2006/09/01	224.69	328.41
2006/10/01	263.89	318.41
2006/11/01	274.76	311.41
2006/12/01	269.98	319.41
2007/01/01	229.73	396.41
2007/02/01	252.59	319.31
2007/03/01	266.27	377.31
2007/04/01	297.41	411.31
2007/05/01	291.41	434.31
2007/06/01	291.32	426.11
2007/07/01	314.69	411.11
2007/08/01	295.99	389.41
2007/09/01	334.23	399.41
2007/10/01	347.31	402.41
2007/11/01	371.21	445.41
2007/12/01	362.24	445.41
2008/01/01	384.31	462.41
2008/02/01	432.65	523.41
2008/03/01	486.13	578.41
2008/04/01	507.13	609.41
2008/05/01	573.34	654.41
2008/06/01	636.89	730.01
2008/07/01	631.24	692.41
2008/08/01	462.16	598.41
2008/09/01	485.67	570.81
2008/10/01	410.23	525.81
2008/11/01	317.09	364.81
2008/12/01	253.49	462.41
2009/01/01	271.56	274.76
2009/02/01	271.41	335.76
2009/03/01	286.78	380.76
2009/04/01	284.90	317.26
2009/05/01	302.96	368.26
2009/06/01	351.66	383.16
2009/07/01	324.26	423.16
2009/08/01	356.84	396.76
2009/09/01	320.54	432.76
2009/10/01	344.73	385.26
2009/11/01	367.63	385.26
2009/12/01	355.38	412.26
2010/01/01	359.69	406.26
2010/02/01	354.28	424.26
2010/03/01	361.30	430.56
2010/04/01	386.30	453.06
2010/05/01	368.83	465.06

Date	Crude Oil Dubai Singapore Refineries F.O.B.	Petrol BFP
2010/06/01	356.06	438.06
2010/07/01	344.27	420.06
2010/08/01	340.23	410.06
2010/09/01	337.49	400.06
2010/10/01	349.22	396.56
2010/11/01	367.04	416.56
2010/12/01	382.70	429.56
2011/01/01	397.67	453.95
2011/02/01	435.45	479.95
2011/03/01	492.01	522.95
2011/04/01	504.41	552.15
2011/05/01	459.21	581.15
2011/06/01	465.37	579.15
2011/07/01	469.88	548.15
2011/08/01	466.33	565.15
2011/09/01	502.92	574.15
2011/10/01	520.67	606.15
2011/11/01	554.63	629.15
2011/12/01	547.24	603.55

Explanatory Notes:

1. This table gives the price of Dubai crude (First Line Average); and the South African Basic Fuel Price (BFP) for Mogas in South African cents per litre.
 2. All prices are in nominal values.
 3. Crude Oil Dubai Singapore Refineries F.O.B. was sourced from SAPIA.
 4. BFP prices for mogas/petrol were sourced from DoE.
-

A sharp price increase was noted in 2008. In this period (2007-2008) BFP recorded 85 % price hike followed by Dubai crude oil with a price increase of 53 % in the same period. Since 2008 the prices dropped drastically in 2009. The price of Dubai crude oil and BFP dropped by 31 % and 34 % respectively due to the international product prices. Between 2010 and 2011 the crude price increased rapidly after the price decrease in 2008/2009. In 2011 Dubai crude oil recorded 35 % price increase and BFP recorded 32 % price increase. This price increase was more likely due to the effect of the political turmoil in the Middle East that threatened world supplies of oil and pushed the price of crude oil up.

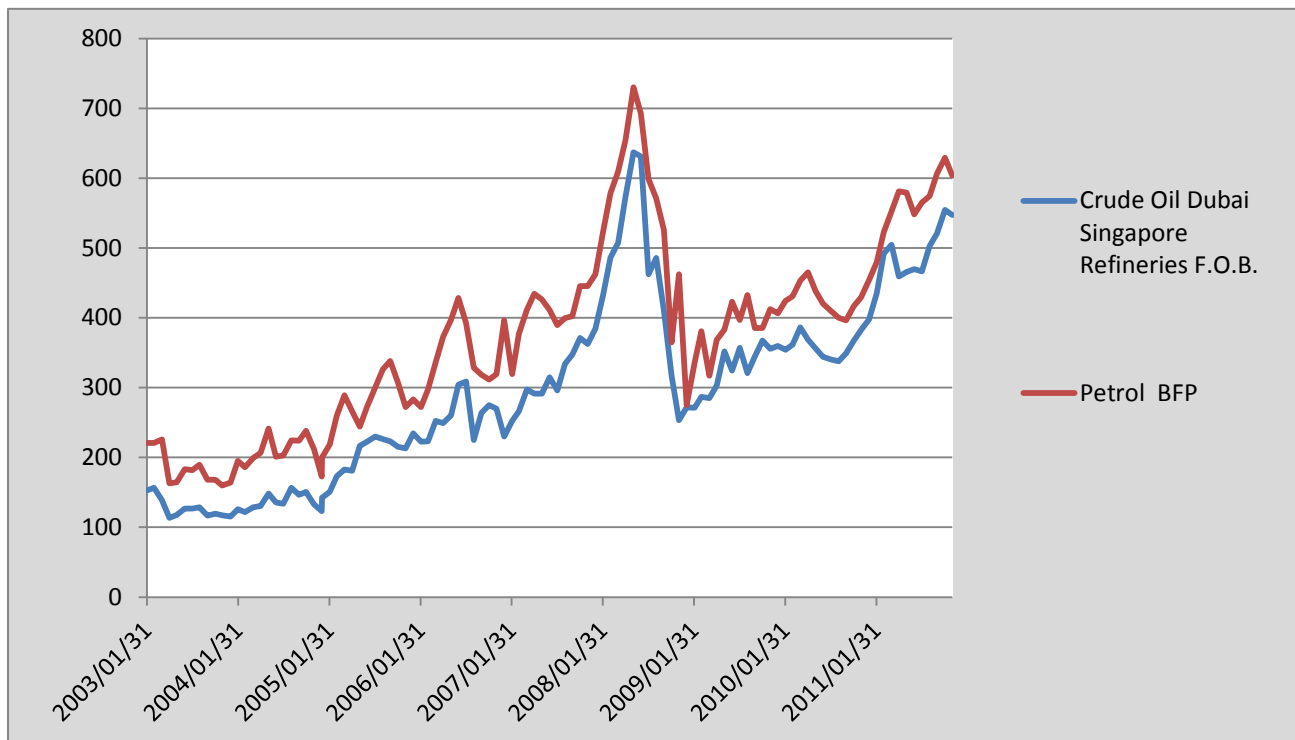


Figure 2.2: Monthly crude oil and BFP prices - cents per litre (c/l)

As clearly shown in the above figure, crude oil and petrol prices are directly interlinked. An increase or a decrease in the international crude oil price has a direct impact in the prices of locally refined products as well as the prices of the imported refined products. Since the price of crude has the most significant long-term impact on the average price of petroleum, contributing almost 50 percent of the retail price, it is not surprising to see the petroleum prices significantly higher.

2.2 Petroleum products

This section will focus on the South African liquid fuels market. The Department of Energy regulates the prices of petrol, diesel, paraffin and LPG and is responsible for reviewing these fuel prices every month. The new fuel prices are announced on the last Friday of the month and are changed on the first Wednesday of the following month. The mechanism that is used to determine the fuel prices in South Africa is the Basic Fuel Price (BFP) principle. The BFP constitutes approximately 51.7% of the final pump price; domestic costs and Government Taxes and Levies account for approximately 19.3% and 29% respectively.

This section covers prices from 2003 to 2011. The individual price components between 2003 and 2010 for Unleaded Petrol (ULP) 93 are based on the Basic Fuel Price principle.

2.2.1 Calculation of the basic fuel price (BFP)

The Basic Fuel Price (BFP) is conceptually an import parity pricing formula and it is intended to establish a realistic estimate of what it would cost to import substantial volumes of refined fuel. The BFP formula replaced the in bond landed cost (IBLC) with effect from 2 April 2003.

The In Bond Landed Cost (IBLC) was first introduced in the 1950's with the establishment of the first refinery in South Africa and was revised in 1995 when a market spot price component was introduced. An investigation by the DME and the oil industry decided that the old formula was no longer relevant because of changes in global markets, and that it was more appropriate to use "spot" prices rather than refinery "posted" prices.

The most important difference between IBLC and BFP is that BFP is based on the spot prices quoted daily in international markets whereas the IBLC was based mainly on certain refinery gate postings which to a large extent have fallen into disuse and are no longer reflective of actual market prices (SAPIA, 2011).

The implementation of Working Rules to administer the price of regulated fuel, originated from recommendations of the Liquid Fuels Industry Task Force (LFITF) and Cabinet approval thereof on 28 September 1994, and are updated to accommodate the termination of the provisions for the addition/subtraction of 1.0 c/l due to the implementation of a Self-adjusting Slate Levy Mechanism (SSLM) and to accommodate the discontinuation of 0.2%

sulphur diesel grade currently published by Platts, a division of the McGraw-Hill Companies (NYSE-MHP) with effect from 1 January 2009 (DME, 2008).

Petrol 95 Octane Unleaded Petrol 93 Unleaded, Diesel 0.05% Sulphur, Diesel 0.005% Sulphur and Illuminating Paraffin are the products covered by the calculation of the basic fuel price. The final fuel price components is the combination of the averaged Cost Insurance Freight (FOB spot prices & spot premiums; plus freight, including demurrage allowances and insurance); plus ocean loss allowance; plus cargo dues (landed costs for imports at South African ports); plus coastal storage cost; plus stock financing cost.

Although the cost of crude oil has the most impact on average petroleum prices in the long term, local market conditions, which include the forces of supply, demand, competition, and government regulation, can also have a significant impact on petroleum prices.

In any market situation, supply and demand imbalances can affect prices in the short term. Supply shortages typically cause upward price pressure, and can result from an unplanned refinery outage, pipeline problems, or an unforeseen increase in demand. Conversely, length of supply, where supply exceeds demand, can result in downward price pressure.

Other factors affecting pricing include foreign exchange, geographic location and local competition. Generally, price adjustments in the market affect short-term supply-demand imbalances and bring supply and demand back into balance. Whether in a situation of supply tightness or length, price will eventually bring the supply-demand balance into equilibrium by attracting additional supply or influencing demand.

For more information on the basic fuel price determination consult the department of energy website, under energy sources>>petroleum>>petrol price document>>working rules to administer the basic fuel price methodology.

2.2.2 Petrol

Prices of ULP 93 and ULP 95 in the coastal and inland regions are shown in Table 2.3 below.

Table 2.3: Monthly retail petrol prices - cents per litre (c/l)

Date	Petrol (ULP) 93		Petrol (ULP) 95	
	Coast	Inland	Coast	Inland
01/04/2006	550.00	536.00	526.00	549.00
02/01/2006	539.00	550.00	540.00	563.00
03/01/2006	539.00	539.00	529.00	552.00
04/05/2006	610.00	559.00	549.00	573.00
05/03/2006	646.00	598.00	588.00	612.00
06/07/2006	671.00	634.00	624.00	648.00
07/05/2006	702.00	659.00	649.00	673.00
08/02/2006	702.00	690.00	680.00	704.00
09/06/2006	613.00	654.00	644.00	668.00
10/04/2006	592.00	604.00	594.00	618.00
11/01/2006	592.00	583.00	573.00	597.00
12/06/2006	585.00	576.00	566.00	590.00
01/03/2007	584.00	584.00	574.00	598.00
02/07/2007	561.00	561.00	551.00	575.00
03/07/2007	585.00	585.00	575.00	599.00
04/04/2007	654.00	677.00	643.00	643.00
05/02/2007	688.00	687.00	677.00	701.00
06/06/2007	711.00	710.00	700.00	724.00
07/04/2007	703.00	702.00	692.00	716.00
08/01/2007	688.00	687.00	677.00	701.00
09/05/2007	678.00	677.00	667.00	691.00
10/03/2007	687.00	687.00	677.00	701.00
11/07/2007	690.00	690.00	680.00	704.00
12/05/2007	733.00	733.00	723.00	747.00
01/02/2008	733.00	733.00	723.00	747.00
02/06/2008	750.00	750.00	740.00	764.00
03/05/2008	811.00	811.00	801.00	825.00
04/02/2008	878.00	877.00	867.00	891.00
05/07/2008	933.00	932.00	922.00	946.00
06/04/2008	983.00	982.00	972.00	996.00
07/02/2008	1060.00	1050.00	1040.00	1070.00
08/06/2008	1020.00	1030.00	1010.00	1040.00
09/03/2008	931.00	952.00	942.00	966.00
10/01/2008	941.00	927.00	917.00	941.00
11/05/2008	879.00	882.00	872.00	896.00
12/03/2008	718.00	721.00	711.00	735.00
01/07/2009	558.00	582.00	576.00	601.00
02/04/2009	619.00	643.00	637.00	662.00
03/04/2009	664.00	688.00	682.00	707.00

Date	Petrol (ULP) 93		Petrol (ULP) 95	
	Coast	Inland	Coast	Inland
05/06/2009	697.00	721.00	710.00	735.00
06/03/2009	712.00	736.00	727.00	750.00
07/01/2009	749.00	773.00	767.00	790.00
08/05/2009	728.00	752.00	746.00	769.00
09/02/2009	764.00	788.00	782.00	805.00
10/07/2009	725.00	749.00	742.00	765.00
11/04/2009	725.00	749.00	742.00	765.00
12/02/2009	752.00	776.00	769.00	792.00
01/06/2010	743.00	767.00	763.00	786.00
02/03/2010	761.00	785.00	781.00	804.00
03/03/2010	767.00	791.00	787.00	810.00
04/07/2010	816.00	840.00	835.00	858.00
05/05/2010	830.00	854.00	848.00	872.00
06/02/2010	803.00	827.00	821.00	845.00
07/07/2010	778.00	812.00	803.00	827.00
08/04/2010	778.00	802.00	793.00	817.00
09/01/2010	768.00	792.00	783.00	807.00
10/06/2010	772.00	796.00	788.00	812.00
11/03/2010	816.00	816.00	808.00	832.00
12/01/2010	805.00	829.00	821.00	845.00
01/05/2011	834.00	858.00	849.00	873.00
02/02/2011	860.00	884.00	875.00	899.00
03/02/2011	902.00	927.00	918.00	942.00
04/06/2011	956.00	980.00	966.00	996.00
05/04/2011	985.00	1009.00	995.00	1025.00
06/01/2011	983.00	1007.00	993.00	1023.00
07/06/2011	967.00	974.00	962.00	992.00
08/03/2011	991.00	991.00	979.00	1009.00
09/07/2011	9976.00	1000.00	988.00	1018.00
10/05/2011	1012.00	1037.00	1024.00	1054.00
11/02/2011	1035.00	1060.00	1047.00	1077.00
12/07/2011	1025.00	1049.00	1036.00	1066.00

Explanatory Notes:

1. ULP = Unleaded Petrol.
 2. ULP 93 is mainly sold in the inland region.
 3. ULP 95 & ULP 93 grades were introduced in February 2006.
 4. Data sourced from DoE.
-

As clearly shown in the table 2.4 below, the price of 93 unleaded petrol reached R10, 60 in July 2008, however this was surpassed in November 2011 when it scaled R10, 66 cents per litre. A breakdown of unleaded petrol 93 price in the inland region (ULP 93) divided into individual components (customs & excise duty, dealers margin, fuel levy, incremental inland transport recovery levy, petroleum products levy, road accident fund levy, service cost recoveries, slate levy, storage, handling & delivery costs, wholesale margin, zone differential and contribution to the basic fuel price) from 2006 to 2011 are shown in Table 2.4. The difference between the retail price of ULP 93 and ULP 95 in the inland region around 15 cents per litre on average mainly due to the 10 cents per litre Demand-Side Management levy charged on ULP 95 as well as quarterly adjustments of octane/grade zone differentials.

Table 2.4: Monthly petrol prices – individual components ULP 93- Inland price - cents per litre (c/l)

Date	BFP	Custom & Excise duty	Dealers margin	Fuel Levy	Incremental transport recover levy	IP Tracer levy	Petroleum Pipeline levy	RAF levy	Service cost recoveries	Slate levy	Wholesale Margin	Zone differential in Gauteng	DMSL	Equalisation Fund levy	Pump Rounding	Retail Price
2006/02/01	280.23	4.00	43.60	116.00	0.00	0.00	0.00	31.50	7.00	15.00	39.27	13.40	0.00	0.00	0.00	550.00
2006/03/01	269.23	4.00	43.60	116.00	0.00	0.00	0.00	31.50	7.00	15.00	39.27	13.40	0.00	0.00	0.00	539.00
2006/05/03	334.63	4.00	43.90	116.00	0.00	0.00	0.00	36.50	7.00	5.00	39.27	13.70	0.00	0.00	0.00	600.00
2006/06/07	370.63	4.00	43.90	116.00	0.00	0.00	0.00	36.50	7.00	5.00	39.27	13.70	0.00	0.00	0.00	636.00
2006/07/05	395.63	4.00	43.90	116.00	0.00	0.00	0.00	36.50	7.00	5.00	39.27	13.70	0.00	0.00	0.00	661.00
2006/08/02	426.63	4.00	43.90	116.00	0.00	0.00	0.00	36.50	7.00	5.00	39.27	13.70	0.00	0.00	0.00	692.00
2006/09/06	426.63	4.00	43.90	116.00	0.00	0.00	0.00	36.50	7.00	5.00	39.27	13.70	0.00	0.00	0.00	692.00
2006/10/04	337.63	4.00	46.90	116.00	0.00	0.00	0.00	36.50	7.00	5.00	39.27	13.70	0.00	0.00	0.00	606.00
2006/11/01	316.63	4.00	46.90	116.00	0.00	0.00	0.00	36.50	7.00	5.00	39.27	13.70	0.00	0.00	0.00	585.00
2006/12/06	309.63	4.00	46.90	116.00	0.00	0.00	0.00	36.50	7.00	5.00	39.27	13.70	0.00	0.00	0.00	578.00
2007/01/03	315.63	4.00	46.90	116.00	0.00	0.00	0.00	36.50	7.00	5.00	39.27	13.70	0.00	0.00	0.00	584.00
2007/02/07	292.63	4.00	46.90	116.00	0.00	0.00	0.19	36.50	7.00	5.00	39.27	13.70	0.00	0.00	0.00	561.00
2007/03/07	315.53	4.00	48.00	116.00	0.00	0.00	0.19	36.50	7.00	4.81	39.27	13.70	0.00	0.00	0.00	585.00

Date	BFP	Custom & Excise duty	Dealers margin	Fuel Levy	Incremental transport recover levy	IP Tracer levy	Petroleum Pipeline levy	RAF levy	Service cost recoveries	Slate levy	Wholesale Margin	Zone differential in Gauteng	DMSL	Equalisation Fund levy	Pump Rounding	Retail Price
2007/04/04	374.53	4.00	48.00	121.00	0.00	0.00	0.19	41.50	7.00	4.81	39.27	13.70	0.00	0.00	0.00	654.00
2007/05/02	408.53	4.00	48.00	121.00	0.00	0.00	0.19	41.50	7.00	4.81	39.27	13.70	0.00	0.00	0.00	688.00
2007/06/06	431.33	4.00	48.00	121.00	0.00	0.00	0.19	41.50	7.00	4.81	39.27	13.90	0.00	0.00	0.00	711.00
2007/07/04	423.33	4.00	48.00	121.00	0.00	0.00	0.19	41.50	7.00	4.81	39.27	13.90	0.00	0.00	0.00	703.00
2007/08/01	408.33	4.00	48.00	121.00	0.00	0.00	0.19	41.50	7.00	4.81	39.27	13.90	0.00	0.00	0.00	688.00
2007/09/05	386.63	4.00	59.70	121.00	0.00	0.00	0.19	41.50	7.00	4.81	39.27	13.90	0.00	0.00	0.00	678.00
2007/10/03	395.63	4.00	59.70	121.00	0.00	0.00	0.19	41.50	7.00	4.81	39.27	13.90	0.00	0.00	0.00	687.00
2007/11/07	398.63	4.00	59.70	121.00	0.00	0.00	0.19	41.50	7.00	4.81	39.27	13.90	0.00	0.00	0.00	690.00
2007/12/05	441.63	4.00	59.70	121.00	0.00	0.00	0.19	41.50	7.00	4.81	39.27	13.90	0.00	0.00	0.00	733.00
2008/01/02	441.63	4.00	59.70	121.00	0.00	0.00	0.19	41.50	7.00	4.81	39.27	13.90	0.00	0.00	0.00	733.00
2008/02/06	458.63	4.00	59.70	121.00	0.00	0.00	0.19	41.50	7.00	4.81	39.27	13.90	0.00	0.00	0.00	750.00
2008/03/05	519.63	4.00	59.70	121.00	0.00	0.00	0.19	41.50	7.00	4.81	39.27	13.90	0.00	0.00	0.00	811.00
2008/04/02	575.63	4.00	59.70	127.00	0.00	0.00	0.19	46.50	7.00	4.85	39.27	13.90	0.00	0.00	0.00	878.00
2008/05/07	606.63	4.00	59.70	127.00	1.50	0.00	0.15	46.50	7.00	24.85	39.27	13.90	0.00	0.00	0.00	933.00
2008/06/04	651.63	4.00	64.70	127.00	1.50	0.00	0.15	46.50	9.50	24.85	39.27	13.90	0.00	0.00	0.00	983.00
2008/07/02	723.23	4.00	64.70	127.00	1.50	0.00	0.15	46.50	9.50	24.85	44.67	13.90	0.00	0.00	0.00	1060.00
2008/08/06	682.63	4.00	64.70	127.00	1.50	0.00	0.15	46.50	9.50	24.85	44.67	14.50	0.00	0.00	0.00	1017.00
2008/09/03	593.63	4.00	64.70	127.00	1.50	0.00	0.15	46.50	9.50	44.85	44.67	14.50	0.00	0.00	0.00	951.00
2008/11/05	519.03	4.00	67.30	127.00	1.50	0.00	0.15	46.50	9.50	44.85	44.67	14.50	0.00	0.00	0.00	879.00
2008/12/03	358.03	4.00	67.30	127.00	1.50	0.00	0.15	46.50	9.50	44.85	44.67	14.50	0.00	0.00	0.00	718.00
2009/01/02	265.98	4.00	67.30	127.00	1.50	0.00	0.15	46.50	9.50	0.00	44.67	15.40	0.00	0.00	0.00	582.00
2009/02/07	326.98	4.00	67.30	127.00	1.50	0.00	0.15	46.50	9.50	0.00	44.67	15.40	0.00	0.00	0.00	643.00
2009/03/04	371.98	4.00	67.30	127.00	1.50	0.00	0.15	46.50	9.50	0.00	44.67	15.40	0.00	0.00	0.00	688.00
2009/04/04	367.48	4.00	67.30	150.00	1.50	0.00	0.15	64.00	9.50	0.00	44.67	15.40	0.00	0.00	0.00	724.00
2009/05/01	364.48	4.00	67.30	150.00	1.50	0.00	0.15	64.00	9.50	0.00	44.67	15.40	0.00	0.00	0.00	721.00

Date	BFP	Custom & Excise duty	Dealers margin	Fuel Levy	Incremental transport recover levy	IP Tracer levy	Petroleum Pipeline levy	RAF levy	Service cost recoveries	Slate levy	Wholesale Margin	Zone differential in Gauteng	DMSL	Equalisation Fund levy	Pump Rounding	Retail Price
2009/06/06	379.38	4.00	67.30	150.00	3.00	0.00	0.15	64.00	9.50	0.00	44.67	14.00	0.00	0.00	0.00	736.00
2009/07/03	416.38	4.00	67.30	150.00	3.00	0.00	0.15	64.00	9.50	0.00	44.67	14.00	0.00	0.00	0.00	773.00
2009/08/01	389.98	4.00	72.70	150.00	3.00	0.00	0.15	64.00	9.50	0.00	44.67	14.00	0.00	0.00	0.00	752.00
2009/09/05	425.98	4.00	72.70	150.00	3.00	0.00	0.15	64.00	9.50	0.00	44.67	14.00	0.00	0.00	0.00	788.00
2009/10/02	379.48	4.00	72.70	150.00	3.00	0.00	0.15	64.00	10.80	0.00	50.87	14.00	0.00	0.00	0.00	749.00
2009/11/07	379.48	4.00	72.70	150.00	3.00	0.00	0.15	64.00	10.80	0.00	50.87	14.00	0.00	0.00	0.00	749.00
2009/12/04	406.48	4.00	72.70	150.00	3.00	0.00	0.15	64.00	10.80	0.00	50.87	14.00	0.00	0.00	0.00	776.00
2010/01/07	397.48	4.00	72.70	150.00	3.00	0.00	0.15	64.00	10.80	0.00	50.87	14.00	0.00	0.00	0.00	767.00
2010/02/02	415.48	4.00	72.70	150.00	3.00	0.00	0.15	64.00	10.80	0.00	50.87	14.00	0.00	0.00	0.00	785.00
2010/03/06	421.78	4.00	72.70	150.00	3.00	0.00	0.15	64.00	10.80	0.00	50.87	14.00	0.00	0.00	-0.30	791.00
2010/04/03	445.28	4.00	72.70	167.50	3.00	0.00	0.15	72.00	10.80	0.00	50.87	14.00	0.00	0.00	-0.30	840.00
2010/05/03	457.28	4.00	72.70	167.50	3.00	0.00	0.15	72.00	10.80	0.00	50.87	15.50	0.00	0.00	0.20	854.00
2010/06/07	445.28	4.00	72.70	167.50	3.00	0.00	0.15	72.00	10.80	0.00	50.87	15.50	0.00	0.00	0.20	842.00
2010/07/05	457.28	4.00	72.70	167.50	3.00	0.00	0.15	72.00	10.80	0.00	50.87	15.50	0.00	0.00	0.20	854.00
2010/08/02	405.28	4.00	72.70	167.50	3.00	0.00	0.15	72.00	10.80	0.00	50.87	15.50	0.00	0.00	0.20	802.00
2010/09/07	395.28	4.00	72.70	167.50	3.00	0.00	0.15	72.00	10.80	0.00	50.87	15.50	0.00	0.00	0.20	792.00
2010/10/04	390.78	4.00	81.20	167.50	3.00	0.00	0.15	72.00	10.80	0.00	50.87	15.50	0.00	0.00	0.20	796.00
2010/11/01	410.78	4.00	81.20	167.50	3.00	0.00	0.15	72.00	10.80	0.00	50.87	15.50	0.00	0.00	0.20	816.00
2010/12/06	423.78	4.00	81.20	167.50	3.00	0.00	0.15	72.00	10.80	0.00	50.87	15.50	0.00	0.00	0.20	829.00
2011/01/03	449.18	4.00	81.20	167.50	3.00	0.00	0.15	72.00	11.40	0.00	53.87	15.50	0.00	0.00	0.20	858.00
2011/02/01	475.18	4.00	81.20	167.50	3.00	0.00	0.15	72.00	11.40	0.00	53.87	15.50	0.00	0.00	0.20	884.00
2011/03/05	518.18	4.00	81.20	167.50	3.00	0.00	0.15	72.00	11.40	0.00	53.87	15.50	0.00	0.00	0.20	927.00
2011/04/02	546.38	4.00	81.20	177.50	3.00	0.00	0.15	80.00	11.40	0.00	53.87	22.90	0.00	0.00	-0.40	980.00
2011/05/02	575.38	4.00	81.20	177.50	3.00	0.00	0.15	80.00	11.40	0.00	53.87	22.90	0.00	0.00	-0.40	1009.00
2011/06/06	573.38	4.00	81.20	177.50	3.00	0.00	0.15	80.00	11.40	0.00	53.87	22.90	0.00	0.00	-0.40	1007.00

Date	BFP	Custom & Excise duty	Dealers margin	Fuel Levy	Incremental transport recover levy	IP Tracer levy	Petroleum Pipeline levy	RAF levy	Service cost recoveries	Slate levy	Wholesale Margin	Zone differential in Gauteng	DMSL	Equalisation Fund levy	Pump Rounding	Retail Price
2011/07/04	540.38	4.00	81.20	177.50	3.00	0.00	0.15	80.00	11.40	0.00	53.87	22.90	0.00	0.00	-0.40	974.00
2011/08/01	557.38	4.00	81.20	177.50	3.00	0.00	0.15	80.00	11.40	0.00	53.87	22.90	0.00	0.00	-0.40	991.00
2011/09/06	566.38	4.00	81.20	177.50	3.00	0.00	0.15	80.00	11.40	0.00	53.87	22.90	0.00	0.00	-0.40	1000.00
2011/10/03	599.38	4.00	85.20	177.50	3.00	0.00	0.15	80.00	11.40	0.00	53.87	22.90	0.00	0.00	-0.40	1037.00
2011/11/07	622.38	4.00	85.20	177.50	3.00	0.00	0.15	80.00	11.40	0.00	53.87	22.90	0.00	0.00	-0.40	1060.00
2011/12/05	596.55	4.00	91.80	177.50	3.00	0.00	0.15	80.00	21.00	0.00	52.50	22.90	0.00	0.00	-0.40	1049.00

Explanatory Notes:

1. All the data was sourced from DoE
-

To identify the contribution of each component to the final price of petrol, all the components are illustrated in Figure 2.3 with their contributions. The basic fuel price and fuel levy were the major contributors to the retail price of ULP 93 in 2011. They both contributed 75% to the final retail price of petrol accounting 56% and 9% respectively. Dealer's margin and Road Accident fund (RAF) followed accounting for 9 % and 8% respectively. Transport recovery levy, petroleum product levy and slate levy were the least component contributors to the ULP 93 retail price with less than 1 % contribution.

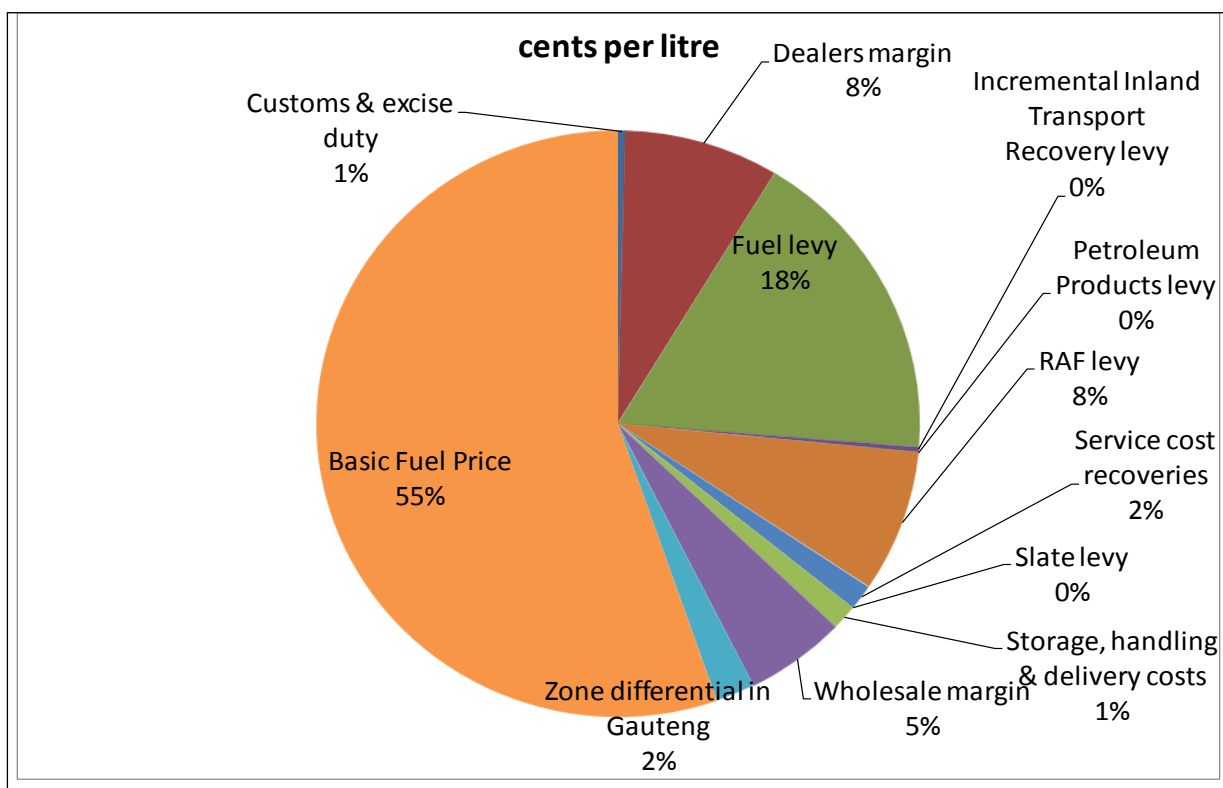


Figure 2.3: Retail petrol prices - individual components 2011 (ULP 93, nominal at coast) - cents per litre (c/l)

2.2.2 Diesel

The Coast and Gauteng prices of 0.05% sulphur diesel are provided in Table 2.5. These prices are from 2006 to 2011. As shown in table 2.5, there was a notable increase in the last quarter of 2000 with 20% increase from the 3rd quarter in the same year. Diesel recorded the highest price in 2008 with a 50% increase from average price in 2007 which was mainly driven by the increase in the price of oil worldwide.

Table 2.5: Monthly diesel wholesale prices - cents per litre (c/l)

Date	Diesel 0.05% Sulphur	
	Coast	Gauteng
2006/01/04	504.50	517.80
2006/02/01	504.50	517.80
2006/03/01	504.50	517.80
2006/04/05	530.50	544.10
2006/05/03	557.50	571.10
2006/06/07	586.50	600.10
2006/07/05	618.50	632.10
2006/08/02	640.50	654.10
2006/09/06	615.50	629.10
2006/10/04	578.50	595.10
2006/11/01	578.50	593.10
2006/12/06	554.50	568.10
2007/01/03	537.50	551.10
2007/02/07	528.50	542.10
2007/03/07	538.50	552.10
2007/04/04	576.50	590.10
2007/05/02	606.50	620.10
2007/06/06	611.50	627.30
2007/07/04	622.50	636.30
2007/08/01	637.50	651.30
2007/09/05	642.50	656.30
2007/10/03	665.50	679.30
2007/11/07	659.50	673.30
2007/12/05	710.50	724.30
2008/01/02	711.50	725.30
2008/02/06	718.50	732.30
2008/03/05	796.50	810.30
2008/04/02	924.50	938.30

Date	Diesel 0.05% Sulphur	
	Coast	Gauteng
2008/05/07	955.50	1009.30
2008/06/04	1066.50	1080.30
2008/07/02	1129.50	1143.70
2008/08/06	1113.50	1127.30
2008/09/03	969.50	983.30
2008/10/01	913.50	927.30
2008/11/05	889.50	903.30
2008/12/03	808.50	822.30
2009/01/07	639.65	654.35
2009/02/04	634.65	649.35
2009/03/04	596.65	611.35
2009/04/01	636.15	650.85
2009/05/06	644.15	658.85
2009/06/03	632.65	645.65
2009/07/01	672.65	685.95
2009/08/05	652.65	665.95
2009/09/02	687.65	700.98
2009/10/07	655.15	668.45
2009/11/04	665.15	678.45
2009/12/02	690.15	703.45
2010/01/06	676.15	689.45
2010/02/03	686.15	699.45
2010/03/03	690.15	703.45
2010/04/07	738.65	751.95
2010/05/05	767.65	781.45
2010/06/02	752.65	766.45
2010/07/07	737.65	751.45
2010/08/04	724.65	738.45
2010/09/01	724.65	738.45
2010/10/06	721.65	735.45
2010/11/03	732.65	746.45
2010/12/01	746.65	760.45
2011/01/05	770.25	789.45
2011/02/02	800.25	814.05
2011/03/02	864.25	878.05
2011/04/06	928.05	948.45
2011/05/04	944.05	964.45
2011/06/01	906.05	926.45
2011/07/06	895.05	915.45

Date	Diesel 0.05% Sulphur	
	Coast	Gauteng
2011/08/03	910.05	930.45
2011/09/07	910.05	930.45
2011/10/05	945.05	965.45
2011/11/02	981.05	1001.45
2011/12/07	1028.29	1097.38

Explanatory Notes:

1. As from March 1998 the wholesale price of Diesel but not the retail price is regulated.
 2. Diesel Grades: With effect from 2 January 2002 the current 0.5% sulphur content diesel grade was replaced by a 0.3% sulphur content diesel grade; on 4 January 2006 0.3% sulphur was replaced with 0.05% sulphur.
 3. The Department of Energy started to report prices of diesel with 0.05% sulphur in 2006.
-

In 2011, the price of diesel reached its highest point when a litre was priced just above R10 as shown in figure 2.4 below.

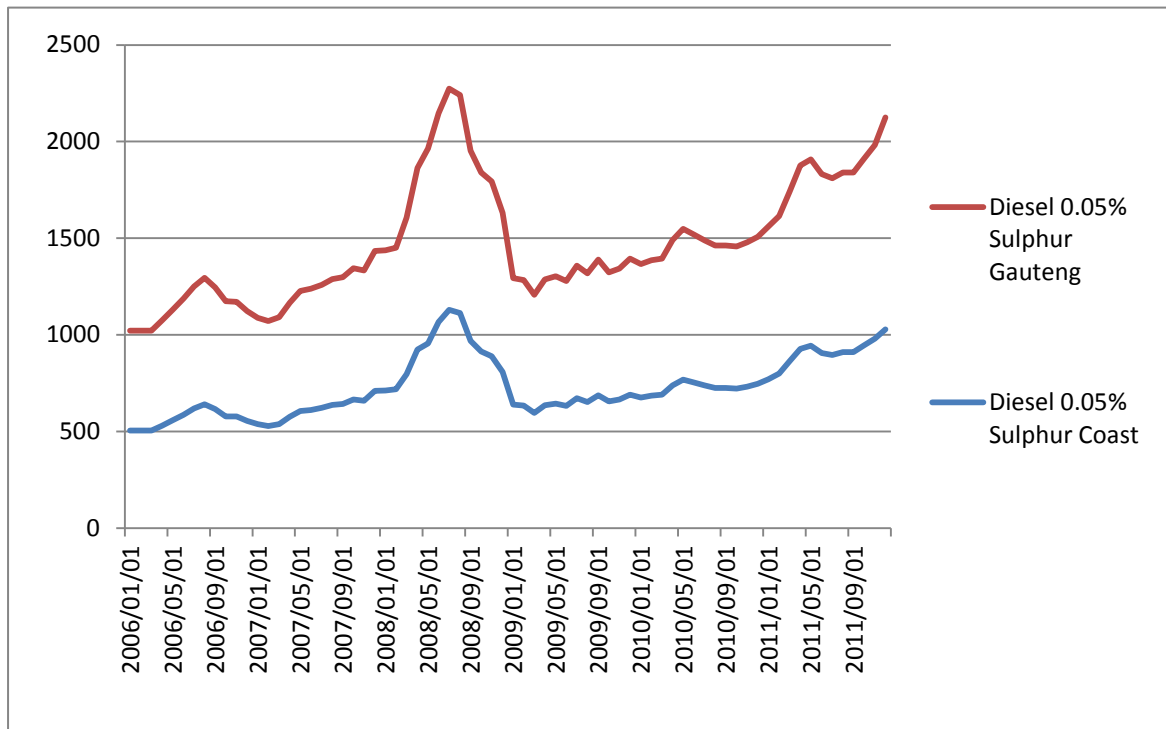


Figure 2.4: Diesel wholesale prices (c/l)

The diesel Individual components (customs & excise duty, fuel levy, incremental inland transport recovery levy, IP tracer levy, petroleum products levy, road accident fund (RAF) levy, service cost recoveries, slate levy , wholesale margin, storage, handling & delivery costs, zone differential in Gauteng and contribution to the basic fuel price of the wholesale price from 2006 to 2011 are shown in Table 2.6.

Table 2.6: Monthly wholesale diesel prices - individual components (Reef) - cents per litre (c/l)

Date	BFP	Custom & Excise duty	Fuel levy	Incremental Inland Transport	IP Tracer levy	Petroleum pipeline levy	RAF levy	Service cost recovery	Slate levy	Wholesale margin	Zone differential in Gauteng	Wholesale price
Diesel 0.05% Sulphur												
2006/02/01	307.63	4.00	100.00	0.00	0.01	0.00	31.50	7.00	15.00	39.26	13.40	517.80
2006/03/01	307.63	4.00	100.00	0.00	0.01	0.00	31.50	7.00	15.00	39.26	13.40	517.80
2006/05/03	369.03	4.00	100.00	0.00	0.01	0.00	36.50	7.00	5.00	39.26	13.70	574.50
2006/06/07	401.03	4.00	100.00	0.00	0.01	0.00	36.50	7.00	5.00	39.26	13.70	606.50
2006/07/05	432.03	4.00	100.00	0.00	0.01	0.00	36.50	7.00	5.00	39.26	13.70	637.50
2006/08/02	457.03	4.00	100.00	0.00	0.01	0.00	36.50	7.00	5.00	39.26	13.70	662.50
2006/09/06	457.03	4.00	100.00	0.00	0.01	0.00	36.50	7.00	5.00	39.26	13.70	662.50
2006/10/04	391.03	4.00	100.00	0.00	0.01	0.00	36.50	7.00	5.00	39.26	13.70	596.50
2006/11/01	390.03	4.00	100.00	0.00	0.01	0.00	36.50	7.00	5.00	39.26	13.70	595.50
2006/12/06	364.03	4.00	100.00	0.00	0.01	0.00	36.50	7.00	5.00	39.26	13.70	569.50
2007/01/03	345.63	4.00	100.00	0.00	0.01	0.00	36.50	7.00	5.00	39.26	13.70	551.10
2007/02/07	336.63	4.00	100.00	0.00	0.01	0.00	36.50	7.00	5.00	39.26	13.70	542.10
2007/03/07	346.63	4.00	100.00	0.00	0.01	0.19	36.50	7.00	4.81	39.26	13.70	552.10
2007/04/04	374.63	4.00	105.00	0.00	0.01	0.19	41.50	7.00	4.81	39.26	13.70	590.10
2007/05/02	404.63	4.00	105.00	0.00	0.01	0.19	41.50	7.00	4.81	39.26	13.70	620.10
2007/06/06	409.63	4.00	105.00	0.00	0.01	0.19	41.50	7.00	4.81	39.26	13.90	625.30
2007/07/04	420.63	4.00	105.00	0.00	0.01	0.19	41.50	7.00	4.81	39.26	13.90	636.30
2007/09/05	440.63	4.00	105.00	0.00	0.01	0.19	41.50	7.00	4.81	39.26	13.90	656.30
2007/10/03	463.63	4.00	105.00	0.00	0.01	0.19	41.50	7.00	4.81	39.26	13.90	679.30
2007/11/07	457.63	4.00	105.00	0.00	0.01	0.19	41.50	7.00	4.81	39.26	13.90	673.30
2007/12/05	508.63	4.00	105.00	0.00	0.01	0.19	41.50	7.00	4.81	39.26	13.90	724.30
2008/01/02	509.63	4.00	105.00	0.00	0.01	0.19	41.50	7.00	4.81	39.26	13.90	725.30
2008/02/06	516.63	4.00	105.00	0.00	0.01	0.19	41.50	7.00	4.81	39.26	13.90	732.30

Date	BFP	Custom & Excise duty	Fuel levy	Incremental Inland Transport	IP Tracer levy	Petroleum pipeline levy	RAF levy	Service cost recovery	Slate levy	Wholesale margin	Zone differential in Gauteng	Wholesale price
2008/03/05	594.63	4.00	105.00	0.00	0.01	0.19	41.50	7.00	4.81	39.26	13.90	810.30
2008/04/02	711.63	4.00	111.00	0.00	0.01	0.15	46.50	7.00	4.85	39.26	13.90	938.30
2008/05/07	758.63	4.00	111.00	1.50	0.01	0.15	46.50	9.50	24.85	39.26	13.90	1009.30
2008/06/04	829.63	4.00	111.00	1.50	0.01	0.15	46.50	9.50	24.85	39.26	13.90	1080.30
2008/07/02	892.63	4.00	111.00	1.50	0.01	0.15	46.50	9.50	24.85	44.66	13.90	1148.70
2008/08/06	870.63	4.00	111.00	1.50	0.01	0.15	46.50	9.50	24.85	44.66	14.50	1127.30
2008/09/03	706.63	4.00	111.00	1.50	0.01	0.15	46.50	9.50	44.85	44.66	14.50	983.30
2008/11/05	626.63	4.00	111.00	1.50	0.01	0.15	46.50	9.50	44.85	44.66	14.50	903.30
2008/12/03	545.63	4.00	111.00	1.50	0.01	0.15	46.50	9.50	44.85	44.66	14.50	822.30
2009/01/02	421.63	4.00	111.00	1.50	0.01	0.15	46.50	9.50	0.00	44.66	15.40	654.35
2009/02/04	416.63	4.00	111.00	1.50	0.01	0.15	46.50	9.50	0.00	44.66	15.40	649.35
2009/03/04	378.63	4.00	111.00	1.50	0.01	0.15	46.50	9.50	0.00	44.66	15.40	611.35
2009/04/01	376.63	4.00	135.00	1.50	0.01	0.15	64.00	9.50	0.00	44.66	15.40	650.85
2009/05/06	384.63	4.00	135.00	1.50	0.01	0.15	64.00	9.50	0.00	44.66	15.40	658.85
2009/06/03	371.63	4.00	135.00	3.00	0.01	0.15	64.00	9.50	0.00	44.66	14.00	645.95
2009/07/01	411.63	4.00	135.00	3.00	0.01	0.15	64.00	9.50	0.00	44.66	14.00	685.95
2009/08/05	391.63	4.00	135.00	3.00	0.01	0.15	64.00	9.50	0.00	44.66	14.00	665.95
2009/09/02	426.63	4.00	135.00	3.00	0.01	0.15	64.00	9.50	0.00	44.66	14.00	700.95
2009/10/07	386.63	4.00	135.00	3.00	0.01	0.15	64.00	10.80	0.00	50.86	14.00	668.45
2009/11/07	396.63	4.00	135.00	3.00	0.01	0.15	64.00	10.80	0.00	50.86	14.00	678.45
2009/12/02	421.63	4.00	135.00	3.00	0.01	0.15	64.00	10.80	0.00	50.86	14.00	703.45
2010/01/06	407.63	4.00	135.00	3.00	0.01	0.15	64.00	10.80	0.00	50.86	14.00	689.45
2010/02/03	417.63	4.00	135.00	3.00	0.01	0.15	64.00	10.80	0.00	50.86	14.00	699.45
2010/03/03	421.63	4.00	135.00	3.00	0.01	0.15	64.00	10.80	0.00	50.86	14.00	703.45
2010/04/07	444.63	4.00	152.50	3.00	0.01	0.15	72.00	10.80	0.00	50.86	14.00	751.95
2010/05/05	472.63	4.00	152.50	3.00	0.01	0.15	72.00	10.80	0.00	50.86	15.50	781.45

Date	BFP	Custom & Excise duty	Fuel levy	Incremental Inland Transport	IP Tracer levy	Petroleum pipeline levy	RAF levy	Service cost recovery	Slate levy	Wholesale margin	Zone differential in Gauteng	Wholesale price
2010/06/02	457.63	4.00	152.50	3.00	0.01	0.15	72.00	10.80	0.00	50.86	15.50	766.54
2010/07/07	442.63	4.00	152.50	3.00	0.01	0.15	72.00	10.80	0.00	50.86	15.50	751.45
2010/08/04	429.63	4.00	152.50	3.00	0.01	0.15	72.00	10.80	0.00	50.86	15.50	738.45
2010/09/01	429.63	4.00	152.50	3.00	0.01	0.15	72.00	10.80	0.00	50.86	15.50	738.45
2010/10/06	426.63	4.00	152.50	3.00	0.01	0.15	72.00	10.80	0.00	50.86	15.50	735.45
2010/11/03	437.63	4.00	152.50	3.00	0.01	0.15	72.00	10.80	0.00	50.86	15.50	746.45
2010/12/01	451.63	4.00	152.50	3.00	0.05	0.15	72.00	10.80	0.00	50.86	15.50	760.45
2011/01/05	471.63	4.00	152.50	3.00	0.01	0.15	72.00	11.40	0.00	53.86	15.50	784.05
2011/02/02	501.63	4.00	152.50	3.00	0.01	0.15	72.00	11.40	0.00	53.86	15.50	814.05
2011/03/02	565.63	4.00	152.50	3.00	0.01	0.15	72.00	11.40	0.00	53.86	15.50	878.05
2011/04/06	610.63	4.00	162.50	3.00	0.01	0.15	80.00	11.40	0.00	53.86	22.90	948.45
2011/05/04	626.63	4.00	162.50	3.00	0.01	0.15	80.00	11.40	0.00	53.86	22.90	964.45
2011/06/01	588.63	4.00	162.50	3.00	0.01	0.15	80.00	11.40	0.00	53.86	22.90	926.45
2011/07/06	577.63	4.00	162.50	3.00	0.01	0.15	80.00	11.40	0.00	53.86	22.90	915.45
2011/08/03	592.63	4.00	162.50	3.00	0.01	0.15	80.00	11.40	0.00	53.86	22.90	930.45
2011/09/07	592.63	4.00	162.50	3.00	0.01	0.15	80.00	11.40	0.00	53.86	22.90	930.45
2011/10/05	627.63	4.00	162.50	3.00	0.01	0.15	80.00	11.40	0.00	53.86	22.90	965.45
2011/11/02	663.63	4.00	162.50	3.00	0.01	0.15	80.00	11.40	0.00	53.86	22.90	1001.45
2011/12/07	702.63	4.00	162.50	3.00	0.01	0.15	80.00	21.00	0.00	52.50	22.90	1048.69
2012/01/04	681.63	4.00	162.50	3.00	0.01	0.15	80.00	21.00	0.00	52.50	22.90	1027.69
2012/02/01	680.63	4.00	162.50	3.00	0.01	0.15	80.00	21.00	0.00	52.50	22.90	1026.69
2012/03/07	686.63	4.00	162.50	3.00	0.01	0.15	80.00	21.00	4.38	52.50	22.90	1037.07
2012/04/04	706.63	4.00	182.50	3.00	0.01	0.15	88.00	21.00	4.38	52.50	26.80	1088.97
2012/05/02	711.63	4.00	182.50	3.00	0.01	0.15	88.00	21.00	8.78	52.50	26.80	1098.37
2012/06/06	684.63	4.00	182.50	3.00	0.01	0.15	88.00	21.00	10.96	52.50	26.80	1073.55
2012/07/04	628.63	4.00	182.50	3.00	0.01	0.15	88.00	21.00	4.38	52.50	26.80	1010.97

Date	BFP	Custom & Excise duty	Fuel levy	Incremental Inland Transport	IP Tracer levy	Petroleum pipeline levy	RAF levy	Service cost recovery	Slate levy	Wholesale margin	Zone differential in Gauteng	Wholesale price
2012/08/01	647.63	4.00	182.50	3.00	0.01	0.15	88.00	21.00	0.00	52.50	26.80	1025.59
2012/09/05	716.63	4.00	182.50	3.00	0.01	0.15	88.00	21.00	0.00	52.50	26.80	1094.59
2012/10/03	742.63	4.00	182.50	3.00	0.01	0.15	88.00	21.00	13.16	52.50	26.80	1133.75
2012/11/07	750.63	4.00	182.50	3.00	0.01	0.15	88.00	21.00	15.36	52.50	26.80	1143.95
2012/12/05	735.63	4.00	182.50	3.00	0.01	0.15	88.00	25.50	15.36	58.00	26.80	1138.95
Diesel 0.005% Sulphur												
2006/02/01	314.03	4.00	100.00	0.00	0.01	0.00	31.50	7.00	15.00	39.26	13.40	524.20
2006/03/01	312.03	4.00	100.00	0.00	0.01	0.00	31.50	7.00	15.00	39.26	13.40	522.20
2006/05/03	369.30	4.00	100.00	0.00	0.01	0.00	36.50	7.00	5.00	39.26	13.70	574.77
2006/06/07	401.03	4.00	100.00	0.00	0.01	0.00	36.50	7.00	5.00	39.26	13.70	606.50
2006/07/05	432.30	4.00	100.00	0.00	0.01	0.00	36.50	7.00	5.00	39.26	13.70	637.77
2006/08/02	457.13	4.00	100.00	0.00	0.01	0.00	36.50	7.00	5.00	39.26	13.70	662.60
2006/09/06	427.13	4.00	100.00	0.00	0.01	0.00	36.50	7.00	5.00	39.26	13.70	632.60
2006/10/04	391.30	4.00	100.00	0.00	0.01	0.00	36.50	7.00	5.00	39.26	13.70	596.77
2006/11/01	390.03	4.00	100.00	0.00	0.01	0.00	36.50	7.00	5.00	39.26	13.70	595.50
2006/12/06	364.03	4.00	100.00	0.00	0.01	0.00	36.50	7.00	5.00	39.26	13.70	569.50
2007/01/02	347.03	4.00	100.00	0.00	0.01	0.00	36.50	7.00	4.81	39.26	13.70	552.31
2007/02/07	341.03	4.00	100.00	0.00	0.01	0.00	36.50	7.00	4.81	39.26	13.70	546.31
2007/03/07	349.03	4.00	100.00	0.00	0.01	0.19	36.50	7.00	4.81	39.26	13.70	554.50
2007/04/04	376.03	4.00	105.00	0.00	0.01	0.19	41.50	7.00	4.81	39.26	13.70	591.50
2007/05/02	406.03	4.00	105.00	0.00	0.01	0.19	41.50	7.00	4.81	39.26	13.70	621.50
2007/06/06	413.03	4.00	105.00	0.00	0.01	0.19	41.50	7.00	4.81	39.26	13.90	628.70
2007/07/04	424.03	4.00	105.00	0.00	0.01	0.19	41.50	7.00	4.81	39.26	13.90	639.70
2007/08/01	439.03	4.00	105.00	0.00	0.01	0.19	41.50	7.00	4.81	39.26	13.90	654.70
2007/09/05	444.03	4.00	105.00	0.00	0.01	0.19	41.50	7.00	4.81	39.26	13.90	659.70
2007/10/03	467.03	4.00	105.00	0.00	0.01	0.19	41.50	7.00	4.81	39.26	13.90	682.70

Date	BFP	Custom & Excise duty	Fuel levy	Incremental Inland Transport	IP Tracer levy	Petroleum pipeline levy	RAF levy	Service cost recovery	Slate levy	Wholesale margin	Zone differential in Gauteng	Wholesale price
2007/11/07	461.03	4.00	105.00	0.00	0.01	0.19	41.50	7.00	4.81	39.26	13.90	676.70
2007/12/05	513.03	4.00	105.00	0.00	0.01	0.19	41.50	7.00	4.81	39.26	13.90	728.70
2008/01/02	513.03	4.00	105.00	0.00	0.01	0.19	41.50	7.00	4.81	39.26	13.90	728.70
2008/02/06	520.03	4.00	105.00	0.00	0.01	0.19	41.50	7.00	4.81	39.26	13.90	735.70
2008/03/05	598.03	4.00	105.00	0.00	0.01	0.19	41.50	7.00	4.81	39.26	13.90	813.70
2008/04/02	717.03	4.00	111.00	0.00	0.01	0.15	46.50	7.00	4.85	39.26	13.90	943.70
2008/05/07	765.03	4.00	111.00	1.50	0.01	0.15	46.50	9.50	24.85	39.26	13.90	1015.70
2008/06/04	835.03	4.00	111.00	1.50	0.01	0.15	46.50	9.50	24.85	39.26	13.90	1085.70
2008/07/02	898.03	4.00	111.00	1.50	0.01	0.15	46.50	9.50	24.85	44.66	13.90	1154.10
2008/08/06	875.03	4.00	111.00	1.50	0.01	0.15	46.50	9.50	24.85	44.66	14.50	1131.70
2008/09/03	709.03	4.00	111.00	1.50	0.01	0.15	46.50	9.50	24.85	44.66	14.50	965.70
2008/11/05	633.03	4.00	111.00	1.50	0.01	0.15	46.50	9.50	44.85	44.66	14.50	909.70
2008/12/03	553.03	4.00	111.00	1.50	0.01	0.15	46.50	9.50	44.85	44.66	14.50	829.70
2009/01/02	431.03	4.00	111.00	1.50	0.01	0.15	46.50	9.50	0.00	44.66	15.40	663.75
2009/02/04	424.03	4.00	111.00	1.50	0.01	0.15	46.50	9.50	0.00	44.66	15.40	656.75
2009/03/04	386.03	4.00	111.00	1.50	0.01	0.15	46.50	9.50	0.00	44.66	15.40	618.75
2009/04/01	384.03	4.00	135.00	1.50	0.01	0.15	64.00	9.50	0.00	44.66	15.40	658.25
2009/05/06	390.03	4.00	135.00	1.50	0.01	0.15	64.00	9.50	0.00	44.66	15.40	664.25
2009/06/03	376.03	4.00	135.00	3.00	0.01	0.15	64.00	9.50	0.00	44.66	14.00	650.35
2009/07/01	416.03	4.00	135.00	3.00	0.01	0.15	64.00	9.50	0.00	44.66	14.00	690.35
2009/08/05	395.03	4.00	135.00	3.00	0.01	0.15	64.00	9.50	0.00	44.66	14.00	669.35
2009/09/02	431.03	4.00	135.00	3.00	0.01	0.15	64.00	9.50	0.00	44.66	14.00	705.35
2009/10/07	390.03	4.00	135.00	3.00	0.01	0.15	64.00	10.80	0.00	50.86	14.00	671.85
2009/11/07	398.03	4.00	135.00	3.00	0.01	0.15	64.00	10.80	0.00	50.86	14.00	679.85
2009/12/02	424.03	4.00	135.00	3.00	0.01	0.15	64.00	10.80	0.00	50.86	14.00	705.85
2010/01/06	410.03	4.00	135.00	3.00	0.01	0.15	64.00	10.80	0.00	50.86	14.00	691.85

Date	BFP	Custom & Excise duty	Fuel levy	Incremental Inland Transport	IP Tracer levy	Petroleum pipeline levy	RAF levy	Service cost recovery	Slate levy	Wholesale margin	Zone differential in Gauteng	Wholesale price
2010/02/03	420.03	4.00	135.00	3.00	0.01	0.15	64.00	10.80	0.00	50.86	14.00	701.85
2010/03/03	420.03	4.00	135.00	3.00	0.01	0.15	64.00	10.80	0.00	50.86	14.00	701.85
2010/04/07	447.03	4.00	152.50	3.00	0.01	0.15	72.00	10.80	0.00	50.86	14.00	754.35
2010/05/05	475.03	4.00	152.50	3.00	0.01	0.15	72.00	10.80	0.00	50.86	15.50	783.85
2010/06/02	460.03	4.00	152.50	3.00	0.01	0.15	72.00	10.80	0.00	50.86	15.50	768.85
2010/07/07	444.03	4.00	152.50	3.00	0.01	0.15	72.00	10.80	0.00	50.86	15.50	752.85
2010/08/04	413.03	4.00	152.50	3.00	0.01	0.15	72.00	10.80	0.00	50.86	15.50	739.85
2010/09/01	433.03	4.00	152.50	3.00	0.01	0.15	72.00	10.80	0.00	50.86	15.50	741.85
2010/10/06	430.03	4.00	152.50	3.00	0.01	0.15	72.00	10.80	0.00	50.86	15.50	738.85
2010/11/03	442.03	4.00	152.50	3.00	0.01	0.15	72.00	10.80	0.00	50.86	15.50	750.85
2010/12/01	457.03	4.00	152.50	3.00	0.01	0.15	72.00	10.80	0.00	50.86	15.50	765.85
2011/01/05	477.03	4.00	152.50	3.00	0.01	0.15	72.00	11.40	0.00	53.86	15.50	789.45
2011/02/02	509.03	4.00	152.50	3.00	0.01	0.15	72.00	11.40	0.00	53.86	15.50	821.45
2011/03/02	572.03	4.00	152.50	3.00	0.01	0.15	72.00	11.40	0.00	53.86	15.50	884.45
2011/04/06	616.03	4.00	162.50	3.00	0.01	0.15	80.00	11.40	0.00	53.86	22.90	953.85
2011/05/04	632.03	4.00	162.50	3.00	0.01	0.15	80.00	11.40	0.00	53.86	22.90	969.85
2011/06/01	595.03	4.00	162.50	3.00	0.01	0.15	80.00	11.40	0.00	53.86	22.90	932.85
2011/07/06	583.03	4.00	162.50	3.00	0.01	0.29	80.00	11.40	0.00	53.86	22.90	920.85
2011/08/03	598.03	4.00	162.50	3.00	0.01	0.29	80.00	11.40	0.00	53.86	22.90	935.85
2011/09/07	598.03	4.00	162.50	3.00	0.01	0.15	80.00	11.40	0.00	53.86	22.90	935.85
2011/10/05	635.03	4.00	162.50	3.00	0.01	0.15	80.00	11.40	0.00	53.86	22.90	972.85
2011/11/02	671.03	4.00	162.50	3.00	0.01	0.15	80.00	11.40	0.00	53.86	22.90	1008.85
2011/12/07	707.03	4.00	162.50	3.00	0.01	0.15	80.00	21.00	0.00	52.50	22.90	1053.09

Description of the table headings:

1. Basic fuel price
 2. Custom & excise duty
 3. Distribution costs
 4. Fuel levy
 5. Incremental Inland Transport Recovery levy
 6. IP Tracer levy
 7. Petroleum Pipeline levy
 8. Petroleum Product levy (previously called Petroleum Pipelines Levy)
 9. RAF levy
 10. Service cost recoveries
 11. Slate levy
 12. Wholesale margin
 13. Storage, handling & delivery costs
 14. Zone differential in Gauteng
 15. Sub-total
 16. Wholesale price
-

There are a number of components that contribute to the wholesale price of diesel as shown in Figure 2.5. These components are added to determine the final price of diesel: customs & excise duty, fuel levy, incremental inland transport recovery levy, IP tracer levy, petroleum products levy, road accident funds (RAF) levy, service cost recoveries, slate levy, wholesale margin, storage, handling & delivery costs, zone differential in Gauteng and contribution to the basic fuel price.

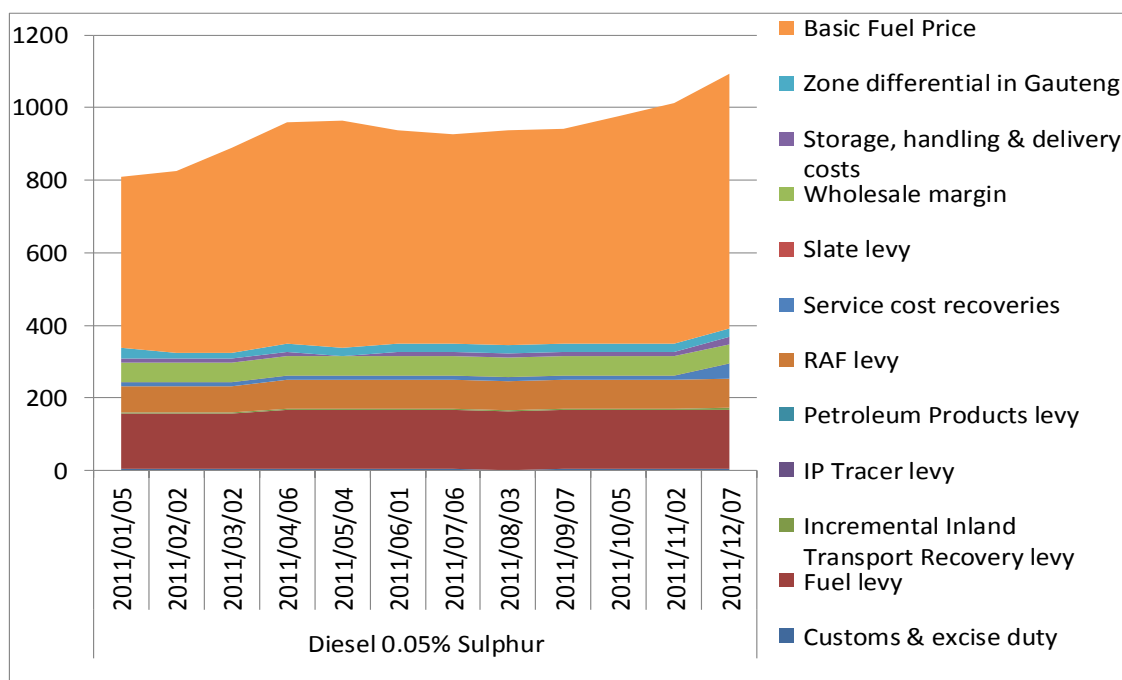


Figure 2.5: Monthly wholesale diesel prices BFP - individual components (nominal on Reef) - cents per litre (c/l)

It is clear from figure 2.5 above that the wholesale diesel price reached its highest level in December 2011. The biggest contribution to the price increase was the BFP and to a smaller extent the increase in the Petroleum Products Levy. As highlighted previously, the key components on the BFP pricing structure are the international crude oil price and the rand/dollar exchange rates.

2.2.3 Illuminating paraffin

The historical prices of illuminating paraffin from 1989 to 2011 are shown in Table 2.7. The prices in the table below are covers both the coast and the reef side in 20l tin customer own collection (coc) and in bulk. The 20l tin COC was discontinued in 2006. The prices are presented in different measuring units.

Table 2.7: Monthly illuminating paraffin price

Date	C/litre (coast)	C/litre (Inland)
2006/02/01	380.20	402.60
2006/03/01	384.20	402.60
2006/04/05	389.20	412.20
2006/05/03	409.20	432.20
2006/06/07	429.20	452.20
2006/07/05	465.20	488.20
2006/08/02	486.20	509.20
2006/09/06	481.20	504.20
2006/10/04	459.20	482.20
2006/11/01	446.20	469.20
2006/12/06	421.20	444.20
2007/01/03	424.20	447.20
2007/02/07	398.20	421.20
2007/03/07	408.20	431.20
2007/04/04	438.20	462.10
2007/05/02	456.20	480.10
2007/06/06	458.20	482.10
2007/07/04	475.20	499.10
2007/08/01	482.20	506.10
2007/09/05	482.20	506.10
2007/10/03	495.20	519.10
2007/11/07	505.20	529.10
2007/12/05	563.20	587.10
2008/01/02	554.20	578.10
2008/02/06	556.20	580.10
2008/03/05	632.20	656.10
2008/04/02	750.20	774.10
2008/05/07	805.70	829.60
2008/06/04	876.70	900.60
2008/07/02	925.70	949.60
2008/08/06	929.10	953.00
2008/09/03	783.10	807.00
2008/10/01	718.10	742.00
2008/11/05	679.10	703.00
2008/12/03	604.10	628.00
2009/01/07	467.60	496.70

Date	C/litre (coast)	C/litre (Inland)
2009/02/04	453.60	482.70
2009/03/04	427.60	456.70
2009/04/01	422.60	451.70
2009/05/06	435.60	464.70
2009/06/03	426.60	455.70
2009/07/01	472.60	501.70
2009/08/05	458.60	487.70
2009/09/02	479.60	508.70
2009/10/07	452.10	481.20
2009/11/04	466.10	495.20
2009/12/02	495.10	524.20
2010/01/06	483.10	512.20
2010/02/03	488.10	517.20
2010/03/03	486.10	515.20
2010/04/07	507.10	536.20
2010/05/05	538.10	566.20
2010/06/02	525.10	553.20
2010/07/07	513.10	541.20
2010/08/04	498.10	526.20
2010/09/01	493.10	521.20
2010/10/06	492.10	520.20
2010/11/03	506.10	534.20
2010/12/01	520.10	548.20
2011/01/05	541.71	569.80
2011/02/02	573.71	601.81
2011/03/02	643.71	671.81
2011/04/06	684.51	720.41
2011/05/04	699.51	735.41
2011/06/01	667.51	703.41
2011/07/06	655.51	691.41
2011/08/03	665.51	701.41
2011/09/07	663.51	699.41
2011/10/05	693.51	729.41
2011/11/02	734.53	770.41
2011/12/07	777.53	770.41

Explanatory Notes:

1. COC = Customer Own Collection.
 2. Data until 2009 was sourced from SAPIA and the Department of Minerals and Energy (DME).
 3. From 2010 the data is sourced from the Department of Energy.
 4. The bulk prices are list prices and exclude a controlled maximum retail margin of 33.3%.
 5. The prices are exclusive of VAT.
-

The Department of Energy started to regulate the maximum retail price for illuminating paraffin, excluding the price of any form of packaging since January 2010. As illustrated in figure 2.10 below the price of illuminating paraffin showed a steady increase in 2011 which could be attributed to the relative increase in crude oil prices.

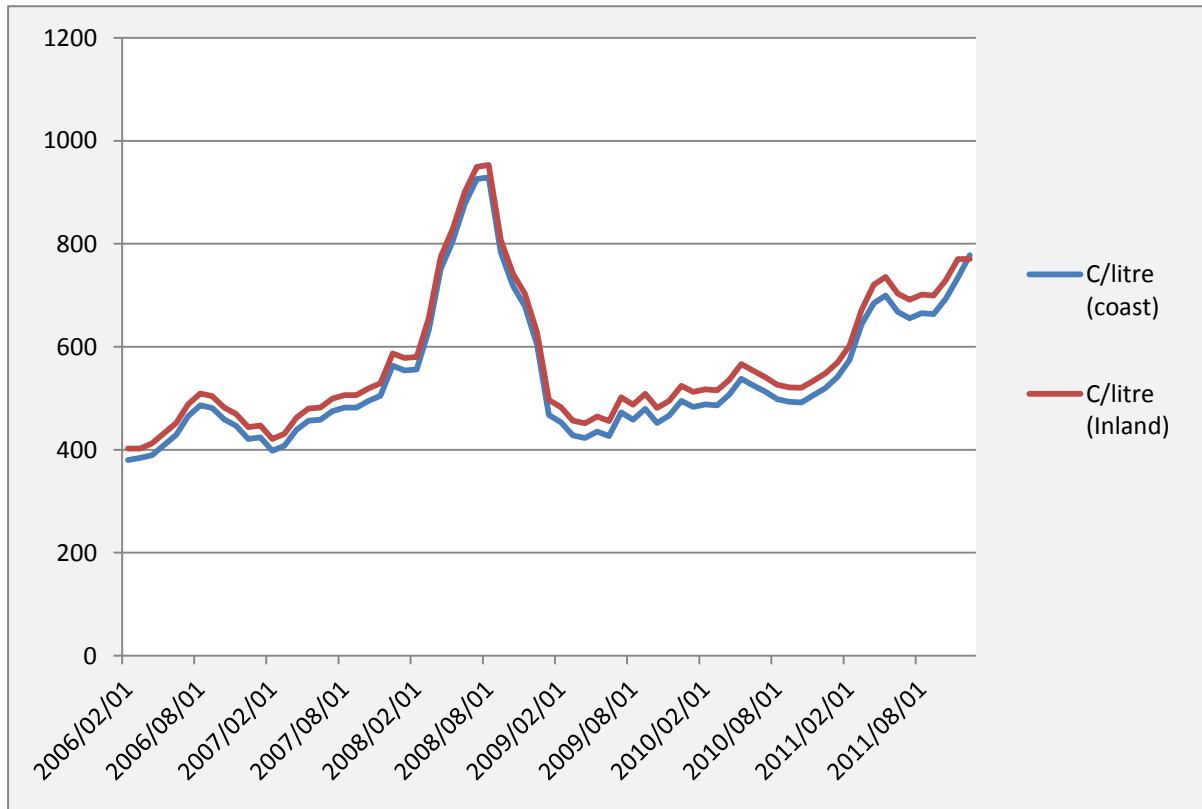


Figure 2.6: Monthly illuminating paraffin price - real prices for 2008 base year (coast) - cents per litre (c/l)

2.2.4 Liquid petroleum gas

Energy consumption in South Africa is divided between industry, mining, commerce (which account for about 60%), households (which consume some 24% of energy), and transport of people and goods. The value of total energy consumption is more than R30bn each year, with LPG only accounting for about 0.5% of that amount. The refinery gate prices of Liquid Petroleum Gas (LPG) from 2002 to 2011 are shown in Table 2.8. These prices are presented in different units including cents per kilogram, cents per litre, rand per gigajoule, rand per kilogram and rand per ton.

Table 2.8: Monthly regulated maximum refinery gate price for liquefied petroleum gas (LPG).

Date	LPG				
	cents per kilogram	cents per litre	Rand per Gigajoule	Rand per kilogram	Rand per ton
2002/07/01	262.13	145.48	53.02	2.62	2621.31
2002/08/01	282.68	156.89	57.17	2.83	2826.82
2002/09/01	293.43	162.86	59.35	2.93	2934.35
2002/10/01	294.70	163.56	59.60	2.95	2947.05
2002/11/01	272.90	151.46	55.19	2.73	2729.01
2002/12/01	245.60	136.31	49.67	2.46	2456.00
2003/01/01	256.21	142.20	51.82	2.56	2562.09
2003/02/01	285.32	158.35	57.71	2.85	2853.18
2003/03/01	275.13	152.69	55.64	2.75	2751.26
2003/04/01	249.71	138.59	50.50	2.50	2497.15
2003/05/01	202.61	112.45	40.98	2.03	2026.15
2003/06/01	236.19	131.09	47.77	2.36	2361.92
2003/07/01	234.88	130.36	47.50	2.35	2348.83
2003/08/01	242.72	134.71	49.09	2.43	2427.17
2003/09/01	222.37	123.41	44.97	2.22	2223.68
2003/10/01	215.31	119.50	43.55	2.15	2153.15
2003/11/01	208.87	115.92	42.24	2.09	2088.72
2003/12/01	207.35	115.08	41.94	2.07	2073.55
2004/01/01	248.79	138.08	50.32	2.49	2487.93
2004/02/01	240.62	133.54	48.66	2.41	2406.19
2004/03/01	258.76	143.61	52.33	2.59	2587.61
2004/04/01	259.87	144.23	52.56	2.60	2598.71
2004/05/01	311.73	173.01	63.05	3.12	3117.35
2004/06/01	270.02	149.86	54.61	2.70	2700.25
2004/07/01	256.53	142.37	51.88	2.56	2565.32
2004/09/01	288.51	160.12	58.35	2.88	2885.13

Date	LPG				
	cents per kilogram	cents per litre	Rand per Gigajoule	Rand per kilogram	Rand per ton
2004/10/01	311.53	172.90	63.01	3.11	3115.28
2004/12/01	234.41	130.10	47.41	2.34	2344.14
2005/01/01	248.90	138.14	50.34	2.49	2489.05
2005/02/01	286.35	158.92	57.91	2.86	2863.49
2005/03/01	317.72	176.34	64.26	3.18	3177.23
2005/04/01	340.90	189.20	68.95	3.41	3409.05
2005/05/01	312.92	173.67	63.29	3.13	3129.20
2005/06/01	364.12	202.08	73.64	3.64	3641.16
2005/07/01	389.62	216.24	78.80	3.90	3896.22
2005/08/01	429.12	238.16	86.79	4.29	4291.23
2005/09/01	442.68	245.69	89.53	4.43	4426.85
2005/10/01	402.77	223.54	81.46	4.03	4027.68
2005/11/01	362.28	201.07	73.27	3.62	3622.84
2005/12/01	357.84	198.60	72.37	3.58	3578.44
2006/01/01	369.85	205.27	74.81	3.70	3698.50
2006/02/01	352.34	195.55	71.27	3.52	3523.42
2006/03/01	395.64	219.58	80.03	3.96	3956.44
2006/04/01	436.88	242.47	88.37	4.37	4368.78
2006/05/01	481.25	267.09	97.34	4.81	4812.47
2006/06/01	518.49	287.76	104.87	5.18	5184.86
2006/07/01	560.85	311.27	113.44	5.61	5608.46
2006/08/01	512.24	284.29	103.61	5.12	5122.37
2006/09/01	438.99	243.64	88.79	4.39	4389.92
2006/10/01	431.72	239.60	87.31	4.32	4317.15
2006/11/01	414.30	229.94	83.79	4.14	4143.03
2006/12/01	422.50	234.49	85.45	4.23	4225.02
2007/01/01	387.83	215.25	78.45	3.88	3878.34
2007/02/01	427.20	237.09	86.41	4.27	4272.00
2007/03/01	495.33	274.91	100.19	4.95	4953.32
2007/04/01	530.06	294.18	107.21	5.30	5300.61
2007/05/01	565.79	314.01	114.44	5.66	5657.85
2007/06/01	557.50	309.41	112.76	5.58	5575.00
2007/07/01	543.76	301.79	109.98	5.44	5437.59
2007/08/01	514.02	285.28	103.97	5.14	5140.23
2007/09/01	529.75	294.01	107.15	5.30	5297.52
2007/10/01	527.73	292.89	106.74	5.28	5277.30
2007/11/01	586.91	325.73	118.71	5.87	5869.08
2008/01/01	612.16	339.75	123.82	6.12	6121.61

Date	LPG				
	cents per kilogram	cents per litre	Rand per Gigajoule	Rand per kilogram	Rand per ton
2008/02/01	689.78	382.82	139.52	6.90	6897.77
2008/03/01	756.74	419.99	153.06	7.57	7567.43
2008/04/01	756.81	420.02	153.06	7.57	7568.07
2008/05/01	788.60	437.67	159.51	7.89	7885.97
2008/07/01	946.61	525.37	191.47	9.47	9466.13
2008/08/01	904.16	501.81	182.88	9.04	9041.62
2008/09/01	789.15	437.98	159.62	7.89	7891.48
2008/10/01	761.67	422.73	154.06	7.62	7616.74
2008/11/01	684.30	379.79	138.41	6.84	6843.00
2008/12/01	480.70	266.79	97.23	4.81	4806.97
2009/01/01	373.97	207.56	75.64	3.74	3739.74
2009/02/01	439.66	244.01	88.93	4.40	4396.58
2009/03/01	473.76	262.94	95.82	4.74	4737.58
2009/04/01	473.81	262.96	95.83	4.74	4812.06
2009/05/01	475.89	264.12	96.26	4.76	4758.95
2009/06/01	492.11	273.12	99.54	4.92	4995.13
2009/07/01	545.75	302.89	110.39	5.46	5457.53
2009/08/01	507.72	281.79	102.69	5.08	5077.22
2009/09/01	566.98	314.68	114.68	5.67	5669.84
2009/10/01	493.70	274.00	99.86	4.94	4936.95
2009/11/01	510.38	283.26	103.23	5.10	5103.85
2009/12/01	534.95	296.90	108.20	5.35	5349.53
2010/01/01	520.57	288.92	105.29	5.21	5205.70
2010/02/01	548.47	304.40	110.94	5.48	5484.74
2010/03/01	550.82	305.71	111.41	5.51	5508.21
2010/04/01	586.72	325.63	271.75	5.87	5867.21
2010/05/01	597.13	331.41	120.78	5.97	5971.28
2010/06/01	566.06	314.16	114.49	5.66	5660.60
2010/07/01	549.45	304.94	111.13	5.49	5494.46
2010/08/01	541.57	300.57	109.54	5.42	5415.68
2010/09/01	521.87	289.64	105.56	5.22	5218.72
2010/10/01	516.70	286.77	104.51	5.17	5166.97
2010/11/01	541.42	300.49	109.51	5.41	5414.20
2010/12/01	553.87	307.40	112.03	5.54	5538.71
2011/01/01	588.84	326.81	119.09	5.89	5888.41
2011/02/01	620.66	344.47	125.53	6.21	6206.59
2011/03/01	647.18	374.17	130.89	6.47	6471.80
2011/05/01	753.33	418.10	152.36	7.53	7533.31

Date	LPG				
	cents per kilogram	cents per litre	Rand per GigaJoule	Rand per kilogram	Rand per ton
2011/06/01	745.53	413.77	150.78	7.45	7455.34
2011/07/01	713.14	395.79	144.23	7.13	7131.37
2011/08/01	742.76	412.23	150.22	7.43	7427.60
2011/09/01	742.44	412.05	150.16	7.42	7424.40
2011/10/01	789.50	438.17	159.63	7.89	7895.03
2011/11/01	815.33	452.52	164.90	8.15	8153.50
2011/12/01	784.71	435.51	158.71	7.84	7847.10

Explanatory Notes:

1. Prices are for the Regulated Maximum Refinery Gate Price.
 2. Data was sourced from CEF Pty Ltd
-

The prices of LPG from 2002 to 2011 are shown in figure 2.7. The LPG price increased at a steady pace until 2005. In that year (2005) the LPG price was 50% more than it was in 2003. Another substantial price increase was in 2006 which recorded a 25% increase from 2005. In 2008 the LPG price reached an all-time high compared to the years under review. The South African power crises contributed to the increase in LPG prices as many people switched to the use of LPG from electricity for heating and cooking purposes. The price dropped late in 2008 and has been lower since then.

The Department of Energy started regulating LPG prices from the 14th of July 2010, by putting a cap on what retailers could charge as it sought to make the product more readily available for low-income households, which generally used wood and paraffin for cooking and heating. From the 14th of July 2010 the maximum price is published by the Department of Energy on the first Wednesday of every month. 2011 recorded higher LPG price increase on average as compared to the price increase experienced in 2010.

The year to year LPG price increase in 2011 recorded 31% from 12% in 2010. The LPG price increase was not the only challenge experienced in 2011, there was also shortage in the supply of LPG in winter caused by the higher demand of LPG during that period in the year. The shortage was also due to the planned and unplanned shut downs of refineries that took place in that period. The shortage had a serious impact on the manufacturing, automotive and hospitality sectors of the economy. The SA Petroleum Industry Association (SAPIA) estimated that there was a 30% shortage of LPG in the market (R Cokayne, Business Day, 2011) in that period.

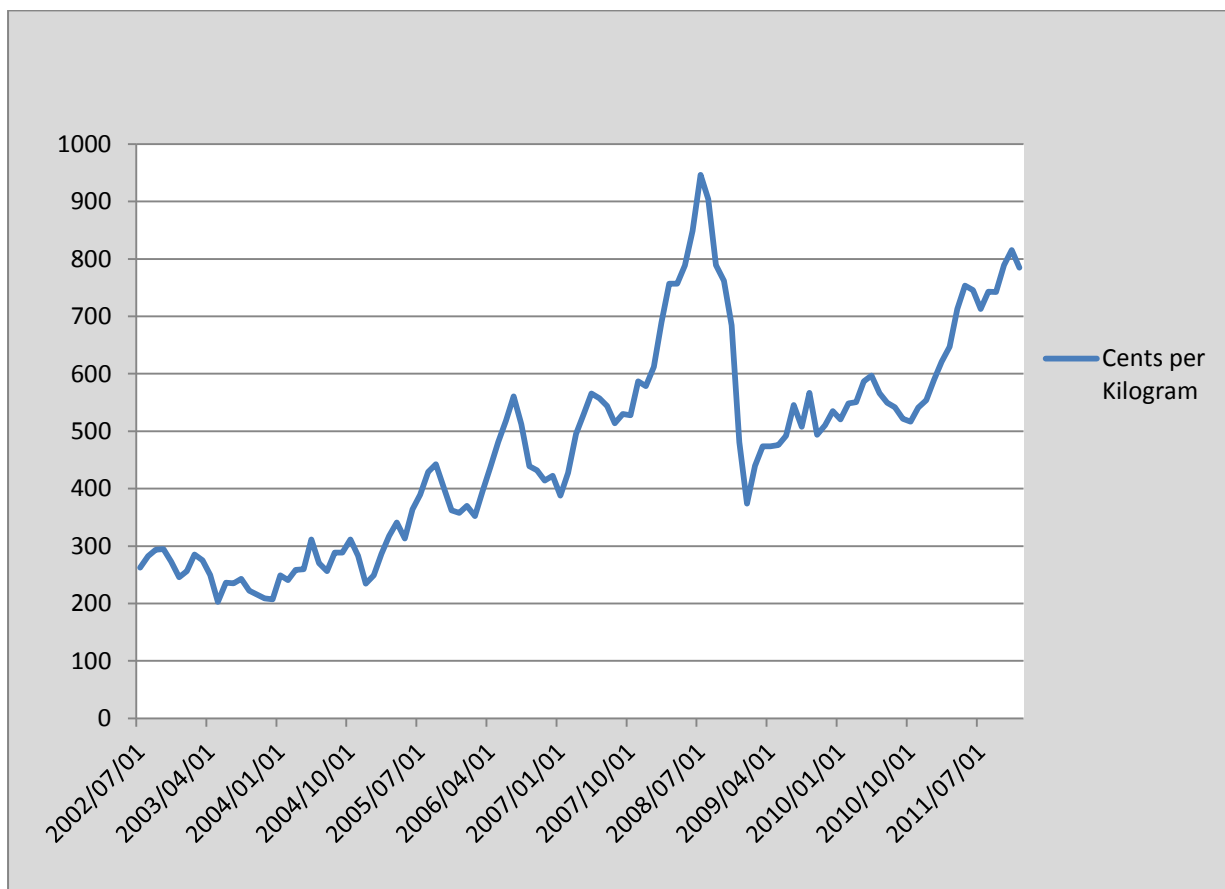


Figure 2.7: Monthly liquefied petroleum gas - regulated maximum refinery gate prices - real prices for 2008 base year (coast) - cents per kilogram (c/kg)

2.3 Natural gas

The historical natural gas tariffs from 2003 to 2011 are shown in Table 2.9. The tariffs are grouped into two categories, Low Volume Category and High Volume Category.

Table 2.9: Annual Natural gas tariffs - Rand per gigajoule(R/GJ)

Date	Low Volume Category	High Volume Category
2002/01/01	5191.46	10588.00
2002/02/01	5458.52	11287.00
2002/03/01	5494.16	11035.00
2002/04/01	5823.45	11393.00
2002/05/01	6051.01	11631.00
2002/06/01	5657.47	10689.00
2002/07/01	5467.98	10342.00
2002/08/01	5583.75	10462.00
2002/09/01	6025.83	11308.00
2002/10/01	6298.02	11818.00
2002/11/01	6079.46	11761.00
2002/12/01	5255.19	10367.00
2003/01/01	5225.9	9940.00
2003/02/01	5391.77	10054.00
2003/03/01	5440.73	10033.00
2003/04/01	5003.91	9608.00
2003/05/01	4408.34	8396.00
2003/06/01	4216.98	7909.00
2003/07/01	4592.93	8461.00
2003/08/01	4583.65	8159.00
2003/09/01	4320.82	8259.00
2003/10/01	4270.03	8208.00
2003/11/01	4082.48	7873.00
2003/12/01	3901.00	7722.00
2004/01/01	3663.00	7368.00
2004/02/01	4053.00	8244.00
2004/03/01	4034.00	7956.00
2004/04/01	3907.00	7844.00
2004/05/01	3886.00	7794.00
2004/06/01	4334.00	8760.00
2004/07/01	4070.00	8123.00
2004/08/01	3815.00	7917.00
2004/09/01	4087.00	8579.00
2004/10/01	4096.00	9037.00
2004/11/01	4340.00	9467.00
2004/12/01	4022.00	8728.00
2005/01/01	3570.00	7645.00

Date	Low Volume Category	High Volume Category
2005/02/01	3712.00	7919.00
2005/03/01	3983.00	8324.00
2005/04/01	4143.00	8942.00
2005/05/01	4812.00	10054.00
2005/06/01	4853.00	9653.00
2005/07/01	5389.00	11013.00
2005/08/01	5450.00	10998.00
2005/09/01	5414.00	10866.00
2005/10/01	5881.00	11179.00
2005/11/01	5877.00	11459.00
2005/12/01	5926.00	10827.00
2006/01/01	5412.00	10248.00
2006/02/01	5412.00	10459.00
2006/03/01	5735.00	10479.00
2006/04/01	6003.00	10935.00
2006/05/01	5933.00	11188.00
2006/06/01	6100.00	11597.00
2006/07/01	6513.00	13007.00
2006/08/01	6984.00	13567.00
2006/09/01	6686.00	13201.00
2006/10/01	6271.00	13148.00
2006/11/01	6655.00	13229.00
2006/12/01	5985.00	12160.00
2007/01/01	5832.00	12024.00
2007/02/01	5841.00	11679.00
2007/03/01	6231.00	11962.00
2007/04/01	6544.00	12625.00
2007/05/01	6913.00	12916.00
2007/07/01	7200.00	13402.00
2007/08/01	7344.00	13424.00
2007/09/01	7532.00	13612.00
2007/10/01	7712.00	14111.00
2007/11/01	7867.00	13964.00
2007/12/01	8845.00	15270.00
2008/01/01	8632.00	15297.00
2008/02/01	8839.00	15511.00
2008/03/01	9517.00	17295.00
2008/04/01	10444.00	19572.00
2008/05/01	10945.00	20530.00
2008/06/01	11700.00	22135.00
2008/07/01	12692.00	24170.00
2008/08/01	14366.00	25169.00
2008/09/01	12625.00	20751.00
2008/10/01	11980.00	19734.00
2008/11/01	11313.00	19602.00
2008/12/01	7806.00	17145.00
2009/01/01	7458.00	15234.00
2009/02/01	7517.00	14887.00

Date	Low Volume Category	High Volume Category
2009/03/01	7896.00	14407.00
2009/04/01	7519.00	13818.00
2009/05/01	7746.00	13799.00
2009/06/01	8061.00	13577.00
2009/07/01	8723.00	14526.00
2009/08/01	8667.00	13999.00
2009/09/01	9277.00	14928.00
2009/10/01	8750.00	13812.00
2009/11/01	8621.00	13766.00
2009/12/01	9346.00	14916.00
2010/01/01	9201.00	14407.00
2010/02/01	9541.00	14871.00
2010/03/01	9243.00	14514.00
2010/04/01	9196.00	14757.00
2010/05/01	9359.00	15342.00
2010/06/01	9586.00	15598.00
2010/07/01	8949.00	14902.00
2010/08/01	8924.00	14694.00
2010/09/01	8919.00	14615.00
2010/10/01	8509.00	14219.00
2010/11/01	8657.00	14395.00
2010/12/01	9015.00	14854.00
2011/01/01	9117.00	15197.00
2011/02/01	9404.00	15691.00
2011/03/01	10857.00	17541.00
2011/04/01	11242.00	18293.00
2011/05/01	11527.00	18722.00
2011/06/01	11234.00	18086.00
2011/07/01	11202.00	17745.00
2011/08/01	11339.00	17978.00
2011/09/01	11697.00	18372.00
2011/10/01	12173.00	19057.00
2011/11/01	13671.00	20351.00
2011/12/01	14030.00	21588.00

Explanatory Notes:

1. Gas prices are negotiated with customers individually. The prices above are indicative of pipeline gas sold by Sasol Gas
 2. The prices above are exclusive of VAT
 3. The prices above are the list prices of the highest and lowest volume categories and do not reflect discounts in the market place
 4. The abovementioned indicative gas prices are subject to monthly adjustment in accordance with the applicable adjustment formula.
-

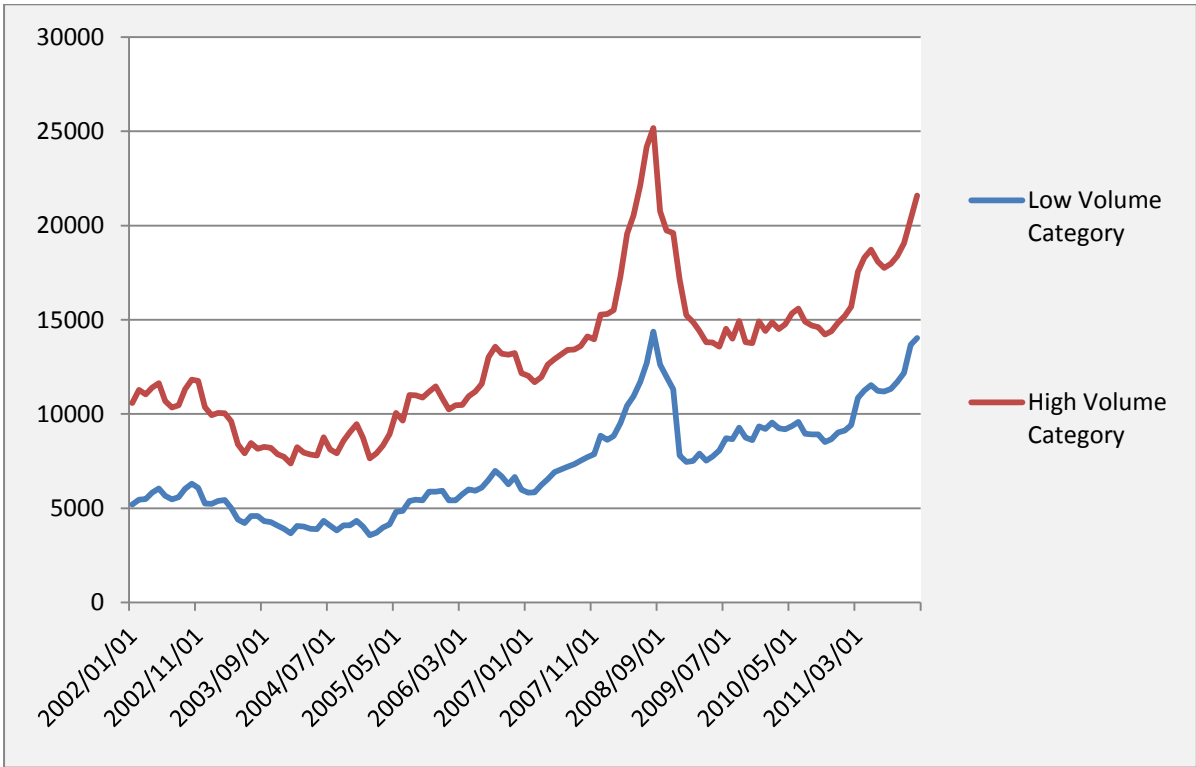


Figure 2.8: Monthly Sasol gas tariff - Rand per gigajoule (R/GJ)

As shown in Figure 2.8 above, both tariffs recorded sharp increases in 2008 which was largely influenced by increasing oil price. In 2009 the tariffs dropped as the oil prices dropped world-wide and again picked up in 2010 and 2011.

3 COAL

About 70% of South Africa's primary energy supply is generated from coal. Coal consumption has increased significantly over the years to meet South Africa's growing energy demand. This growing demand has in turn also affected the price of coal. The following section provides the prices of thermal coal sold locally and export prices.

3.1 Local and export coal prices

The average prices of anthracite coal and bituminous coal from 2001 to 2010 are shown in Table 3.1. These prices are in nominal and real terms. They are average prices of exports free on board for both anthracite coal and bituminous coal.

Table 3.1: Annual average local and export coal prices - Rand per ton (R/t)

Date	Coal Bituminous				Coal Anthracite			
	Average Price Exports (FOB)		Average Price Local Sales (FOR)		Average Price Exports (FOB)		Average Price Local Sales (FOR)	
	Nominal Price	Real Price	Nominal Price	Real Price	Nominal Price	Real Price	Nominal Price	Real Price
2001/01/01	244.33	369.64	62.06	93.89	292.43	442.41	320.09	484.25
2002/01/01	278.65	386.48	73.92	102.52	378.07	524.37	379.55	526.42
2003/01/01	187.66	245.95	77.77	101.93	294.87	386.46	394.32	516.80
2004/01/01	202.09	261.10	74.29	95.98	260.92	337.11	417.25	539.08
2005/01/01	295.58	369.47	84.42	105.52	318.58	398.22	414.33	517.91
2006/01/01	310.42	370.87	85.17	101.76	415.58	496.51	477.17	570.10
2007/01/01	358.83	400.03	105.86	118.02	444.93	496.02	485.67	541.44
2008/01/01	735.64	735.64	150.68	150.68	602.11	602.11	604.24	604.24
2009/01/01	517.91	474.28	171.63	157.17	889.64	814.69	690.36	632.20
2010/01/01	549.33	486.13	180.50	159.73	776.83	687.46	781.75	691.81

Explanatory Notes:

1. Values for average local and export nominal and real cost prices for bituminous and anthracite are from the Minerals Bureau.
2. The real price was calculated by using the annual CPI with 2008 = 100.
3. FOB: Free On Board.
4. FOR: Free On Road.
5. The prices are exclusive of VAT.

Coal dominates South Africa's energy market because it is an abundant source of energy in the country and can be produced relatively cheaply locally compared to importing other sources of energy. The local sales of two types of coal, anthracite and bituminous used in SA are analysed in Figure 3.1.

The nominal prices of both types of coal sold locally were equal in the early 70's. The prices started to vary around 1974, when anthracite coal price increased in relative value. In that period the nominal prices of both anthracite coal and bituminous coal were increasing but anthracite was increasing at a faster rate than bituminous coal.

In 1991 the price of anthracite coal increased by 17% from 1990 whereas bituminous coal increased by 7% in the same period. During that period the nominal export price of both anthracite coal and bituminous coal grew by 13% and 7% respectively. Another noticeable price increase was in 1996 on anthracite coal after a price drop in 1992. Over the 4 year period (1992-1996) the nominal local price of anthracite coal recorded a 77% price increase. From then the price of anthracite coal has been increasing at a faster rate than that of bituminous coal, most likely because anthracite coal is a high quality coal that produces high energy than the bituminous coal.

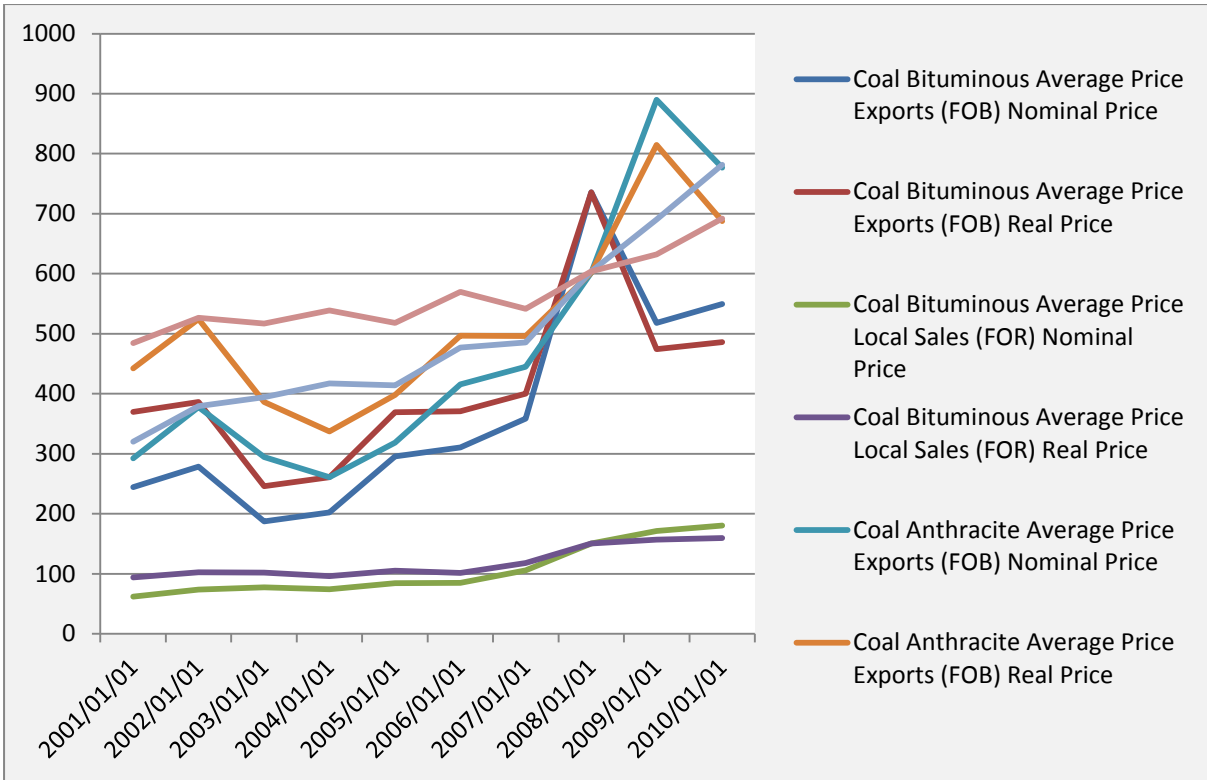


Figure 3.1: Annual average local sales (FOB) - real prices for 2008 base year - coal price - Rand per ton (R/t)

As depicted in Figure 3.1, with an exception to Anthracite coal exports prices, generally the prices of all coal types showed an increasing trend specifically from 2006 to 2011.

The local average and retail price of coal in the country is presented in Table 3.2. These coal data is shown in different categories according to their use such as coal for electricity used by Eskom, Coal Anthracite Minerals Bureau, Coal Bituminous Minerals Bureau, Coal Domestic use Statistics South Africa, Coal Domestic use Statistics South Africa and Coal Bituminous Metallurgical Minerals Bureau. The data presented in table 3.2 covers the period from 2001 to 2011.

Table 3.2: Annual local coal prices - Rand per ton (R/t)

Date	Coal for electricity Eskom	Coal Anthracite Minerals Bureau	Coal Bituminous Minerals Bureau			Coal Domestic use Statistics SA	Coal Bituminous Metallurgical Minerals Bureau
	weighted average local cost	Average Local Price	Average Local Price	Retail	weighted average industry	Retail	Average Price
2001/01/01		320.09	62.06	99.12	118.77	-	159.85
2002/01/01		379.55	73.92	114.33	132.37	-	193.87
2003/01/01		394.32	77.77	129.77	149.09	-	170.23
2004/01/01		417.25	74.29	127.00	124.00	-	179.00
2005/01/01		414.33	84.42	122.00	134.00	-	185.00
2006/01/01		455.30	90.06	144.29	137.35	-	299.80
2007/01/01		485.67	105.86	174.39	187.02	-	359.31
2008/01/01		604.24	150.68	334.43	291.58	-	641.60
2009/01/01		690.36	171.63	594.92	398.96	-	659.35
2010/01/01		781.75	180.50	354.00	342.00	-	447.00
2011/01/01		898.90	196.02	395.00	362.00	-	963.67

Coal prices are reported by Eskom, Department of Mineral Resources (previously the Minerals Bureau) and Statistics South Africa. The price of coal depends on its specifications and what it is used for. Different coal grades are available in South Africa and are used for different purposes. Anthracite coal is the most expensive coal with the highest energy content and it is used in applications where low smoke and low ashes are desired. Bituminous coal has high energy content but lower quality than anthracite. High quality bituminous coal is used in metallurgy whereas lower quality bituminous coal is used in the electricity transformation. Overall, the nominal prices of all coals have been increasing since 2010 with coal bituminous bouncing back up from its sharp decline in 2009 to 2011.

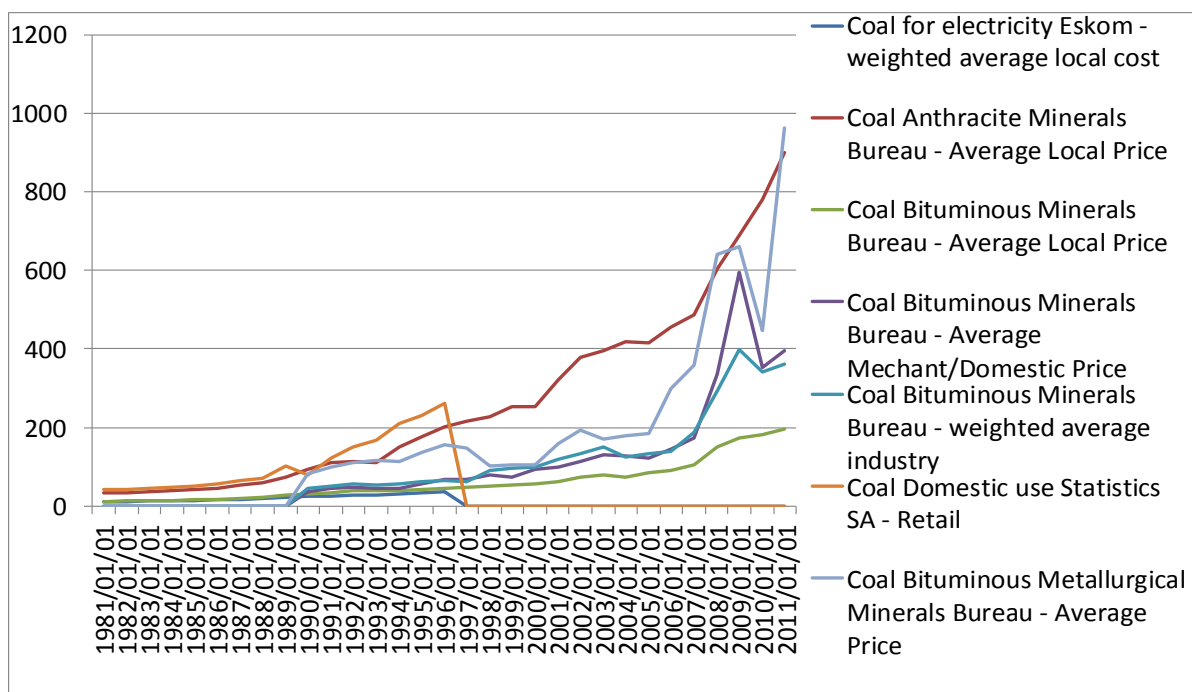


Figure 3.2: Annual local coal prices (nominal) - Rand per ton (R/t)

4 ELECTRICITY

The cost of electricity in South Africa is among the world's lowest and Eskom is the main generator of electricity in South Africa. The revenue generated by Eskom per kwh for various customer categories from different uses are shown in Table 4.1. These prices vary according to their uses and the demand thereof. The data for commercial uses, industrial uses and commercial uses are published and given from 2001 to 2011.

Table 4.1: Annual electricity Eskom price by customer category (nominal prices)-cents per kilowatt per hour (c/kWh)

Date	Average	Bulk	Domestic and Street Lighting	Commercial	Industrial	International	Eskom Mining	Rural / Farming	Traction
2001/01/01	27.52	25.82	61.80	35.90	23.12	22.94	26.70	53.70	31.38
2002/01/01	29.96	28.18	66.86	39.02	25.76	28.88	28.28	52.94	34.30
2003/01/01	32.10	30.50	73.16	41.24	28.32	19.10	30.14	58.28	37.96
2004/01/01	32.08	30.38	77.40	43.76	27.94	17.26	30.72	61.66	38.74
2006/01/01	34.10	32.26	80.16	45.38	29.50	19.66	32.38	65.72	40.50
2007/01/01	39.20	36.42	89.12	49.70	34.56	28.34	35.98	71.82	46.62
2008/01/01	49.94	46.58	99.76	59.02	40.50	34.46	43.18	85.48	55.62
2009/01/01	32.00	28.79	59.74	38.26	25.24	20.98	28.24	55.05	35.69
2010/01/01	40.31	39.53	66.45	52.63	34.34	31.04	39.78	72.72	48.55
2011/01/01	50.27	49.46	79.52	65.92	42.13	37.53	50.11	89.22	58.23

Explanatory Notes:

1. The data in this table is from various Eskom Statistical Yearbooks and Annual Reports.
2. The price data in this table is only applicable to Eskom's direct sales to the categories as listed. Sales by local authorities to the Domestic, Commercial and Industry categories are not included in this table. Some data on prices for electricity sold by local authorities is given in Table 3.4.
3. The prices are in c/kWh for each of a number of sales categories.
4. The real price was calculated by using the annual CPI (see Table 5.1) with 2008 = 100.
5. Prices are exclusive of VAT

Eskom generates its revenue from different electricity users; Table 4.2 shows various types of electricity users from 2001 to 2011. The electricity usage includes electricity used for domestic and street lighting, commercial, industrial, international, mining and farming.

Table 4.2: Annual electricity Eskom prices by customer category (real prices) - cents per kilowatt per hour (c/kWh)

Date	Eskom Average	Eskom Bulk	Eskom Domestic and Street Lighting	Eskom Commercial	Eskom Industrial	Eskom International	Eskom Mining		Eskom Rural / Farming
	cents per kiloWatt hour	cents per kiloWatt hour	cents per kiloWatt hour	cents per kiloWatt hour	cents per kiloWatt hour	cents per kiloWatt hour	cents per kiloWatt hour	cents per kiloWatt hour	cents per kiloWatt hour
2001/01/01	20.82	19.53	46.75	27.16	17.49	17.35	20.20	40.62	23.74
2002/01/01	20.78	19.54	46.37	27.06	17.86	20.03	19.61	36.71	23.79
2003/01/01	21.04	19.99	47.94	27.02	18.56	12.52	19.75	38.19	24.88
2004/01/01	20.72	19.63	50.00	28.27	18.05	11.15	19.84	39.83	25.03
2006/01/01	20.37	19.27	47.89	27.11	17.62	11.74	19.34	39.26	24.19
2007/01/01	21.85	20.30	49.68	27.70	19.26	15.80	20.06	40.03	25.99
2008/01/01	24.97	23.29	49.88	29.51	20.25	17.23	21.59	42.74	27.81
2009/01/01	29.30	26.36	54.71	35.04	23.11	19.21	25.86	50.41	32.68
2010/01/01	35.67	34.98	58.81	46.58	30.39	27.47	35.20	64.35	42.96
2011/01/01	42.86	42.17	67.79	56.20	35.92	31.99	42.72	76.06	49.64

Explanatory Notes:

1. The data in this table is from various Eskom Statistical Yearbooks and Annual Reports.
 2. The price data in this table is only applicable to Eskom's direct sales to the categories as listed. Sales by local authorities to the Domestic, Commercial and Industry categories are not included in this table. Some data on prices for electricity sold by local authorities is given in Table 3.4.
 3. The prices are c/kWh for each of a number of sales categories.
 4. The real price was calculated by using the annual CPI (see Table 5.1) with 2008= 100.
 5. Prices are exclusive of VAT
-

Figure 4.1 shows that during 80's domestic and street lighting contributed a significant share to Eskom's revenue from electricity. Along the years Eskom's prices kept on increasing with domestic and street lighting electricity prices still showing the highest contribution. Individual consumers were spending more on electricity than other industries. This was due to arrangements made in the 70's when Eskom was making long term contracts with industry to utilise all the available power stations. These long term contracts were done on a constant tariff whereas the individual consumers' prices were adjusted annually via the tariff.

Despite this decrease, domestic and street lighting still contributed more to Eskom's revenue compared to industry, though industry's contribution has shown a continued steep increase since 2008 to 2011. Nevertheless, Eskom's revenue on electricity has been high as the price of electricity has been increasing year after year to date.

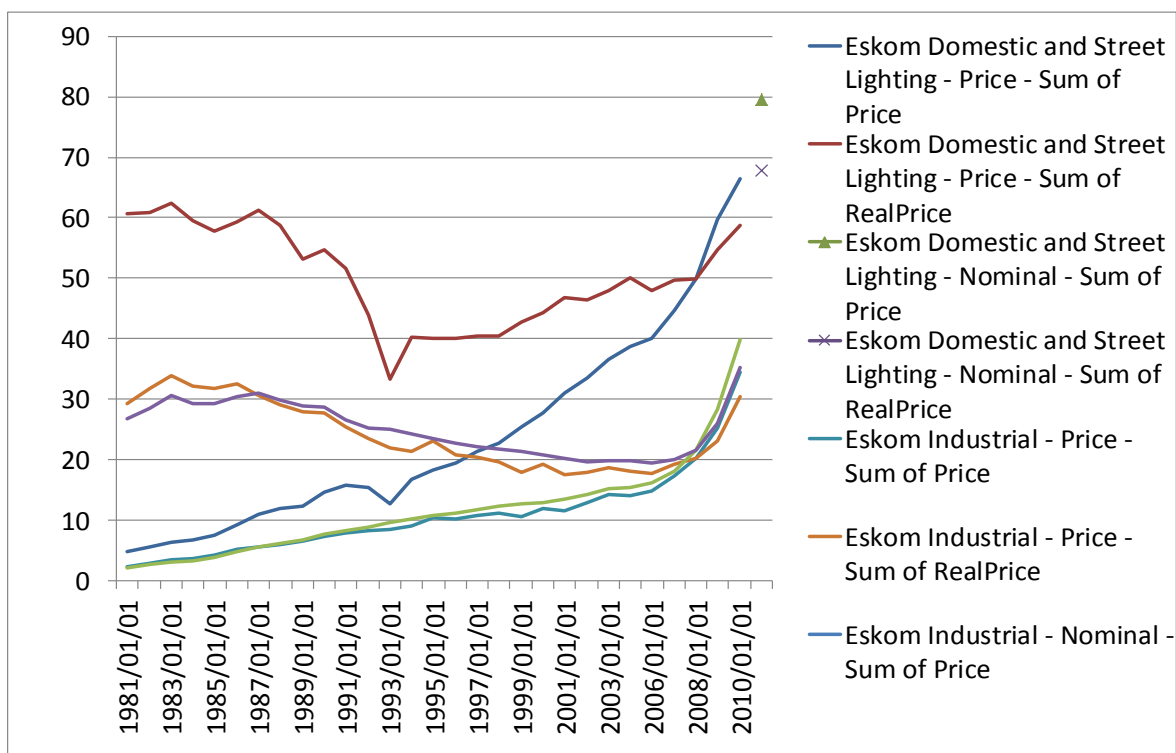


Figure 4.1: Annual Eskom prices by customer category - cents per kilowatt per hour (c/kWh)

Additional power stations and major power lines are being built to meet rising electricity demand. There is an anticipated supply shortage between 2010 and 2016. The base-case outlook up to 2016 based on the IRP 2010 moderate demand scenario suggests a high likelihood that there will be an electricity supply shortfall

over the period until 2015. The supply/demand balance is anticipated to be tight for 2011-2012 as additional supply options are relatively limited until new build capacity (Medupi and Kusile) start to come on stream (IRP 2010).The GDP growth assumptions in the IRP were higher than the current projections by National Treasury.

There are different types of domestic tariffs provided by Eskom, Table 4.3 shows Homelight 1 Previous S1 (2.5 A, 20A, 5A and 60A), Homelight 2 Previous S2 (20A and 60A) and Electricity Eskom S1 Tariff. These tariffs are provided in different units.

Table 4.3: Annual Eskom domestic tariffs

	Electricity Eskom Domestic Homelight 1 Previous S1						Electricity Eskom Domestic Homelight 2 Previous S2				Electricity Eskom S1 Tariff
Date	2.5A	20A		5A	60A		20A		60A		Domestic Prices
	cents per kiloWatt-hour	cents per kiloWatt-hour	Rand per GigaJoule	Rand per GigaJoule	cents per kiloWatt-hour	Rand per GigaJoule	cents per kiloWatt-hour	Rand per GigaJoule	cents per kiloWatt-hour	Rand per GigaJoule	Rand per GigaJoule
2001/01/01	-	33.12	92.00	-	37.25	103.50	28.76	79.89	32.89	91.36	103.47
2002/01/01	35.17	35.17	97.69	97.69	39.56	109.90	30.54	84.83	34.93	97.03	109.89
2003/01/01	38.13	38.13	105.92	105.92	42.89	119.14	33.11	91.97	37.87	105.19	119.14
2004/01/01	39.08	39.08	108.56	108.56	43.96	122.11	33.94	94.28	38.82	107.83	122.11
2005/01/01	40.68	40.68	113.00	113.00	45.76	127.11	35.33	98.14	40.41	112.25	127.11
2006/01/01	42.75	42.75	118.75	118.75	48.09	133.58	37.13	103.14	42.47	117.97	133.58
2007/01/01	45.27	45.27	125.75	125.75	50.93	141.47	39.32	109.22	44.98	124.94	141.47
2008/01/01	51.70	103.40	143.61	143.61	58.20	161.67	45.00	125.00	51.40	142.78	161.67
2009/01/01	57.49	57.49	159.69	159.69	64.96	180.44	49.78	138.28	57.14	158.72	180.44
2010/01/01	55.54	55.54	154.28	154.28	56.19	156.08	48.44	134.56	49.77	138.25	156.08

Explanatory Notes:

1. This table gives Eskom's domestic tariff structure.
2. The S-tariffs are valid for pre-paid meters (Now called "Home light"). The different tariffs refer to the different ratios of investment between Eskom and the customer.
3. The S1 and S2 tariffs are based on 20 amp and 60 amp supply.
4. The tariffs are exclusive of VAT.
5. Home light 1, 2.5A was in a pilot study stage in 2001.

Other tariffs provided by Eskom are found in Table 4.4. These tariffs include Domestic Homelight 3 Previous S3 (60A), Electricity Eskom Domestic Homepower 60A Previous Tarrifs C (Average (@1000 KWh/m), Average (@500 KWh/m), basic and energy) and Eskom S1 Tariff. This data is given from 1986 to 2010 in different units.

Table 4.4: Annual Eskom domestic tariffs

Date	Electricity Eskom Domestic Homelight 3 Previous S3		Electricity Eskom Domestic Homepower 60A Previous Tarrifs C						Electricity Eskom S1 Tariff	
	60A		Average (@1000 KWh/m)		Average (@500 KWh/m)		Basic	Energy	Domestic Prices	
	cents per kiloWatthour	Rand per GigaJoule	cents per kiloWatthour	Rand per GigaJoule	cents per kiloWatthour	Rand per GigaJoule	Rand	cents per kiloWatthour	Rand per GigaJoule	Rand per GigaJoule
2001/01/01	-	-	26.73	74.26	30.89	85.79	41.53	22.58	62.72	103.47
2002/01/01	-	-	28.39	78.86	32.80	91.11	44.10	23.98	66.61	109.89
2003/01/01	-	-	32.25	89.58	41.48	115.22	92.35	23.01	63.92	119.14
2004/01/01	-	-	31.78	88.28	39.04	108.44	72.62	24.52	68.11	122.11
2005/01/01	-	-	32.94	91.50	39.42	109.50	64.80	26.46	73.50	127.11
2006/01/01	-	-	34.62	96.17	41.43	115.08	68.10	27.81	77.25	133.58
2007/01/01	-	-	36.65	101.81	43.85	121.81	72.00	29.45	81.81	141.47
2008/01/01	-	-	49.18	136.61	58.84	163.44	96.60	39.52	109.78	161.67
2009/01/01	-	-	62.40	173.33	74.40	206.67	120.00	50.40	140.00	180.44
2010/01/01	-	-	80.84	224.56	96.38	267.72	155.40	65.30	181.39	156.08

Explanatory Notes:

1. This table gives Eskom's domestic tariff structure.
2. Columns 7 and 8 refer to normal C tariff customers (Now called "Home power"). There is a basic charge (col. 7) in Rand per month and an energy charge (col. 8) in c/kWh.
3. The S-tariffs are valid for pre-paid meters (Now called "Home light"). The different tariffs refer to the different ratios of investment between Eskom and the customer.
4. Columns 3 and 5 indicate unit (kWh) prices for Tariff C customers given a consumption of 500 kWh / month and 1000 kWh/month respectively. This takes the basic and the energy charges into account.
5. The tariffs are exclusive of VAT.
6. Home light 1, 2.5A was in a pilot study stage in 2001.
7. 2002 (1) tariffs for January 2002 to end of June 2002.
8. 2002(2) restructuring of all Eskom tariffs were reviewed and restructured on the 1st of July 2002.

APPENDIX A: Economic Indicators

This section includes monthly and annual economic indicator data. Consumer price index, production price index, exchange rates and monthly foreign exchange rates are covered in this section. These economic indicators are published by the Reserve Bank of South Africa and Statistics South Africa and are the official figures used in South Africa. The annual consumer price index data from 1981 to 2011 is shown in Table A.1.

Table A.1: Annual consumer price index (CPI) and Production Price Index (PPI)

Labels	CPI (2008=100)	PPI (2000=100)
2001/01/01	66.10	108.4
2002/01/01	72.10	118.8
2003/01/01	76.30	125.9
2004/01/01	77.40	126.7
2005/01/01	80.00	130.6
2006/01/01	83.70	142.5
2007/01/01	89.70	158.1
2008/01/01	100.00	180.85
2009/01/01	109.20	180.79
2010/01/01	113.00	192.4
2011/01/01	117.30	207.6

The annual production price index (PPI) and consumer price index (CPI) data is provided in Table A.1. This data is collected from 2001 to 2011 using the 2000 as the base year. The annual percentage change in the PPI was 8.9% in July 2011. This rate is 1.5 percentage points higher than the corresponding annual rate of 7.4% in June 2011. The 8.9% increase could be attributed to increases in the annual rate of change in the producer price index for mining and quarrying, agriculture, chemicals and chemical products, water and gas, metal products, wearing apparel and non-electrical machinery and equipment.

4.1 Exchange rates

The historical foreign exchange rate of South African rand compared to the US\$ is shown in Table A.2. The exchange rates in the table below ranges from 2001 to 2011.

Table A.2: Annual foreign currency exchange rates

Date	SA c/US\$
2001/01/01	861.87
2002/01/01	1145.45
2003/01/01	756.47
2004/01/01	644.99
2005/01/01	634.81
2006/01/01	674.66
2007/01/01	709.38
2008/01/01	705.44
2009/01/01	843.72
2010/01/01	732.22
2011/01/01	725.31

As shown in table A.2 above, the South African rand depreciated against the US d in 2009. Since 2010 the rand has gradually gained some momentum from an average of R7.32/US\$ in 2010 to an average of R7.25/US\$ in 2011.

APPENDIX B: FUEL PROPERTIES

Table B.1: Calorific values of various fuels

Carrier	CalorificValue	CalorificValueUnit	Density
LPG	26.7	MJ/l	0.54
Paraffin Power	37.5	MJ/l	0.81
Gas SASOL	18.0	MJ/m ³	
Diesel	38.1	MJ/l	0.84
Electricity	3.6	MJ/kWh	
Gas	41.0	MJ/m ³	
Heavy Fuel Oil	41.6	MJ/l	0.98
Petrol	34.2	MJ/l	0.72
Paraffin Illuminating CSS (StatsSA) Data	37.0	MJ/l	0.79
Aviation Gas	33.9	MJ/l	0.73
Jet Fuel	34.3	MJ/l	0.79
Coal Eskom Average	20.1	MJ/kg	
Coal (General purpose)	24.3	MJ/kg	
Coal (Coking)	30.1	MJ/kg	
Coke	27.9	MJ/kg	
Coke oven gas	17.3	MJ/m ³	
Blast furnace gas	3.1	MJ/m ³	
Bagasse (wet)	7.0	MJ/kg	
Bagasse fibre (dry)	14.0	MJ/kg	
Biomass (wood dry typical)	17.0	MJ/kg	
Gas Sasol - methane rich	35.0	MJ/m ³	

APPENDIX C: UNIT CONVERSIONS

Table C.1: Energy unit conversion factors

From \ To	J	kWh	toe	Btu
1 J	1	0.278×10^{-6}	0.2388×10^{-6}	0.948×10^{-3}
1 kWh	3.6×10^6	1	0.86×10^{-6}	3.412×10^3
1 toe	42×10^9	11630	1	39.68×10^6
1 Btu	1.055×10^3	0.293×10^{-3}	0.252×10^{-9}	1

Note: toe = ton oil equivalent

Table C.2: Unit prefixes

Prefix	Symbol	Power
Kilo	k	10^3
Mega	M	10^6
Giga	G	10^9
Tera	T	10^{12}
Peta	P	10^{15}
Exa	E	10^{18}

References

1. Verleger P.K.,1990:Understanding the 1990 oil crisis, journal page 15:34, International Association for Energy Economics (08 March 2010)
2. Panikar P. G. K., 1991,Oil: From Crisis to Crisis, pp. 479-481, Economic and Political Weekly, (08 March 2010)
3. Van Horen, C. 1996. Counting the Social Costs: Electricity and Externalities in South Africa.Cape Town: Elan Press and UCT Press.
4. Fin24 (Jul 26 2006), Gas crisis in SA (10 September 2010)
<http://www.fin24.com/Business/Gas-crisis-in-SA-20060726>
5. HIS Global Insight (1 Feb 2008), Electricity Crisis in South Africa Intensifies (10 September 2010)
<http://www.ihsglobalinsight.co.za/News/news.asp?id=720>,
6. The International Development Research Centre (2010), Chapter 2: Cheap energy—at what cost? Externalities in South Africa’s electricity sector (16 September 2010) http://www.idrc.ca/en/ev-138013-201-1-DO_TOPIC.html
7. South African Petroleum Industry Association (SAPIA) website (2010), Basic fuel price (BFP) formula (14 January 2011)
<http://www.sapia.co.za/pubs/bfp.htm>
8. DME (2003), Working Rules to Administer the Basic Fuels Price (BFP) Methodology, Annexure A & Annexure B
9. DoE (2010), South African Energy synopsis, p.37
10. DoE (2010), Electricity Regulations on the Integrated Resource Plan 2010-2030, p62
11. The shortage of LPG (1 November 2011)
<http://www.engineeringnews.co.za/article/doe-working-with-industry-to-alleviate-lpg-shortages>

